



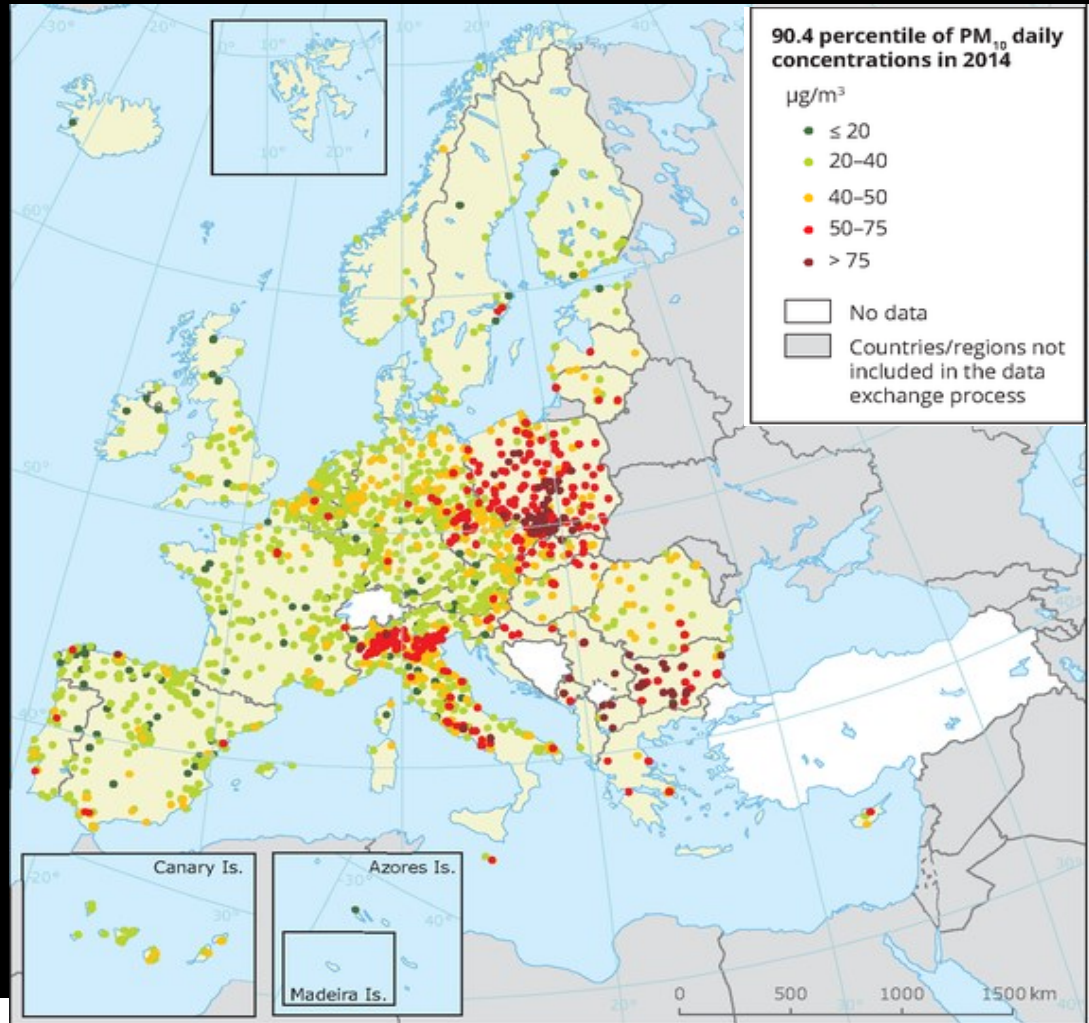
CFD and wind tunnel modelling of green infrastructures effects on air quality

In Porto's urban area

Vera Rodrigues, Sandra Rafael, Sandra Sorte, Bruno Vicente, Joana Leitão, Myriam Lopes, Ana Isabel Miranda & Carlos Borrego

Motivation

Urban areas sustainability is alarmingly threatened by air pollution





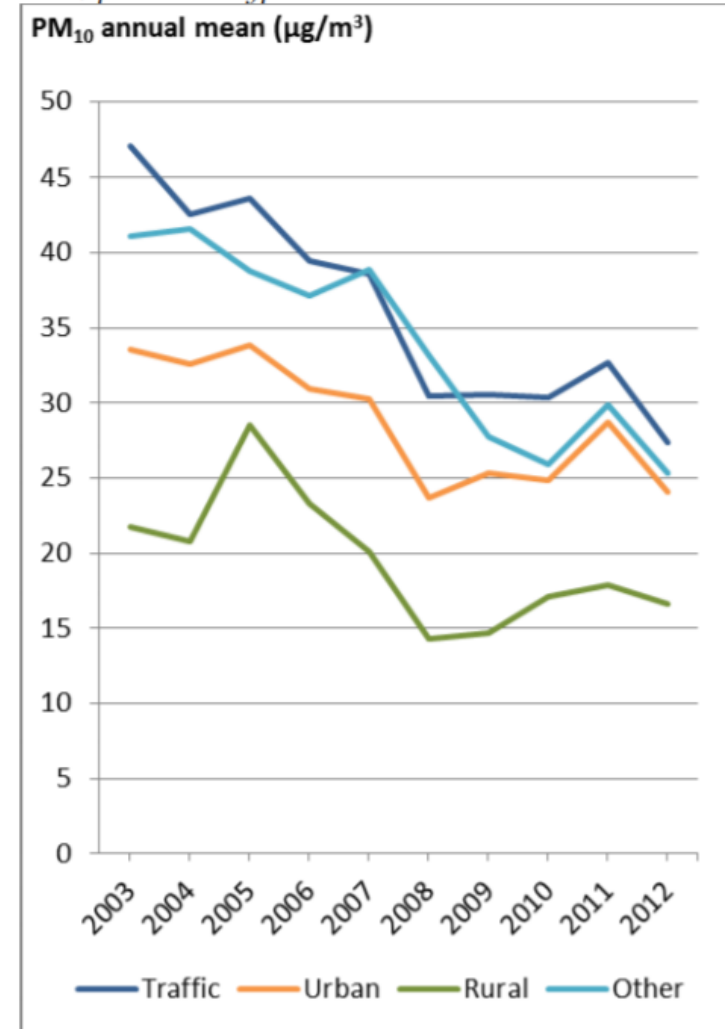
Case study: Porto urban area

Air pollution episodes

Porto urban agglomeration
– several exceedances –
26 PM10 exceedances in 2010

Impacts on human health

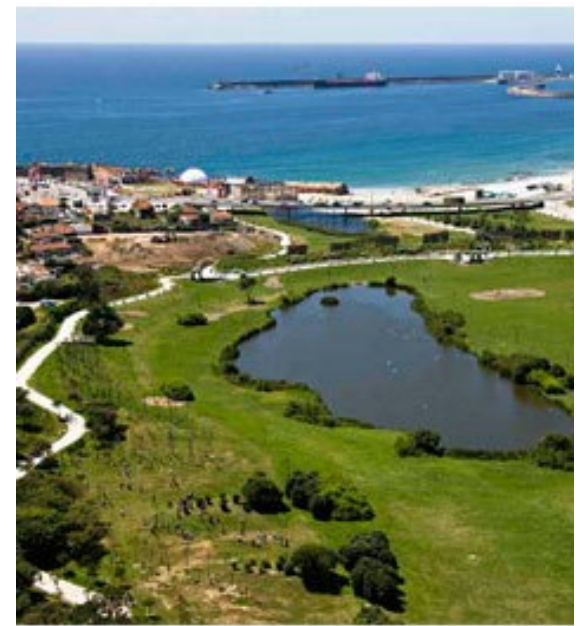
Changes in annual mean concentrations of PM₁₀ (2003-2012) per station type





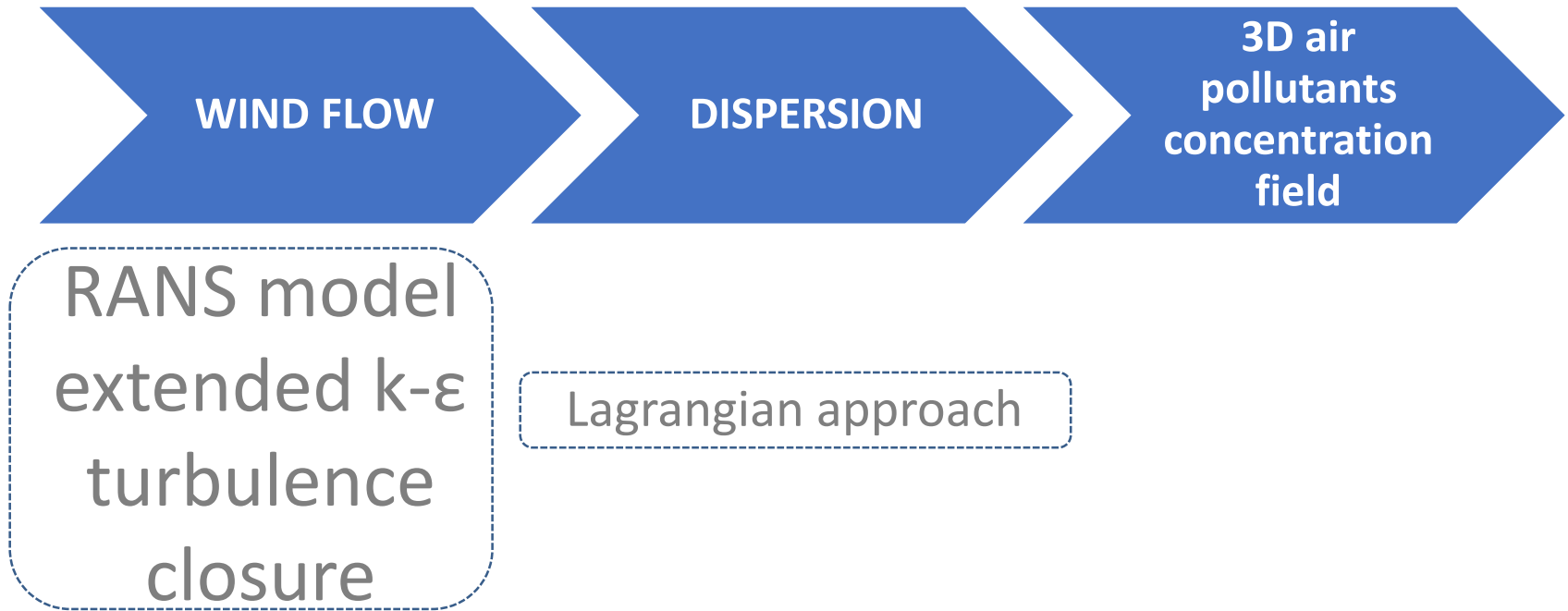
CLICURB

Urban
atmospheric
quality, climate
change
and resilience

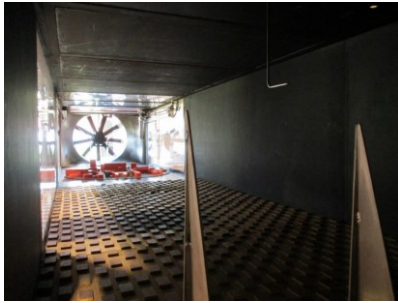
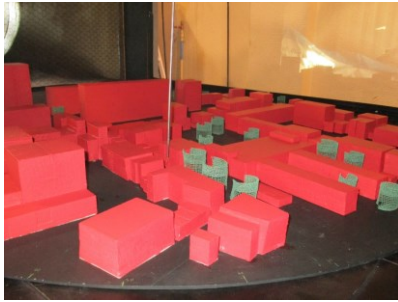


Green infrastructures effects
on flow dynamics

- Meteorology
- Urban elements geometry
- Computational domain
- Grid resolution
- **3D wind field**
- Emission rate
- Emission configuration



CFD model VADIS

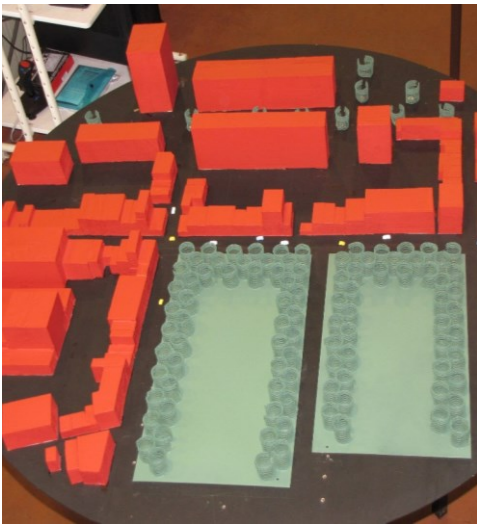


Physical simulations wind tunnel

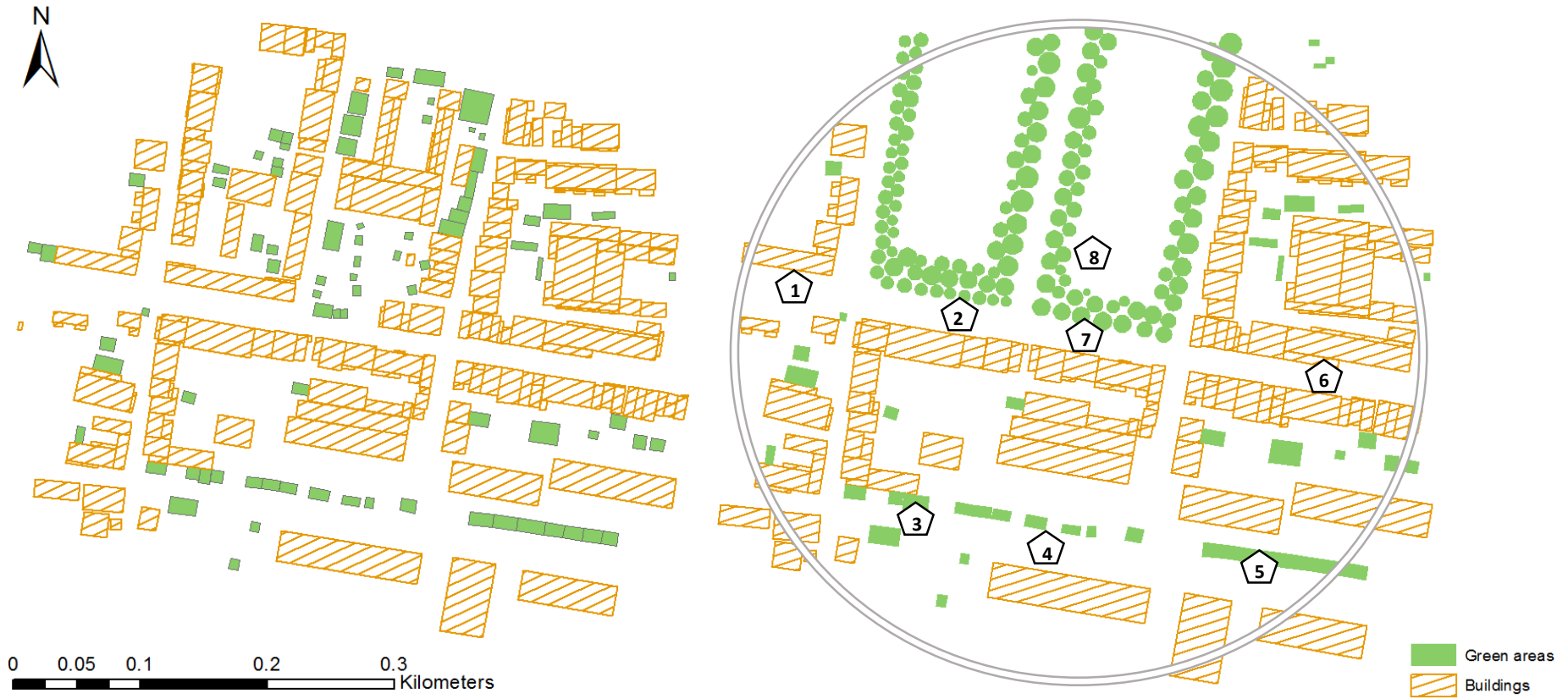
- Atmospheric boundary layer simulation
- Neutral stability conditions
- Wind tunnel test section of 6.5 m x 1.5 m x 1 m
- Turbulence generators and roughness elements
- Hot-wire anemometer (TSI IFA-300)
- Mock up scale 1:250

Physical simulations

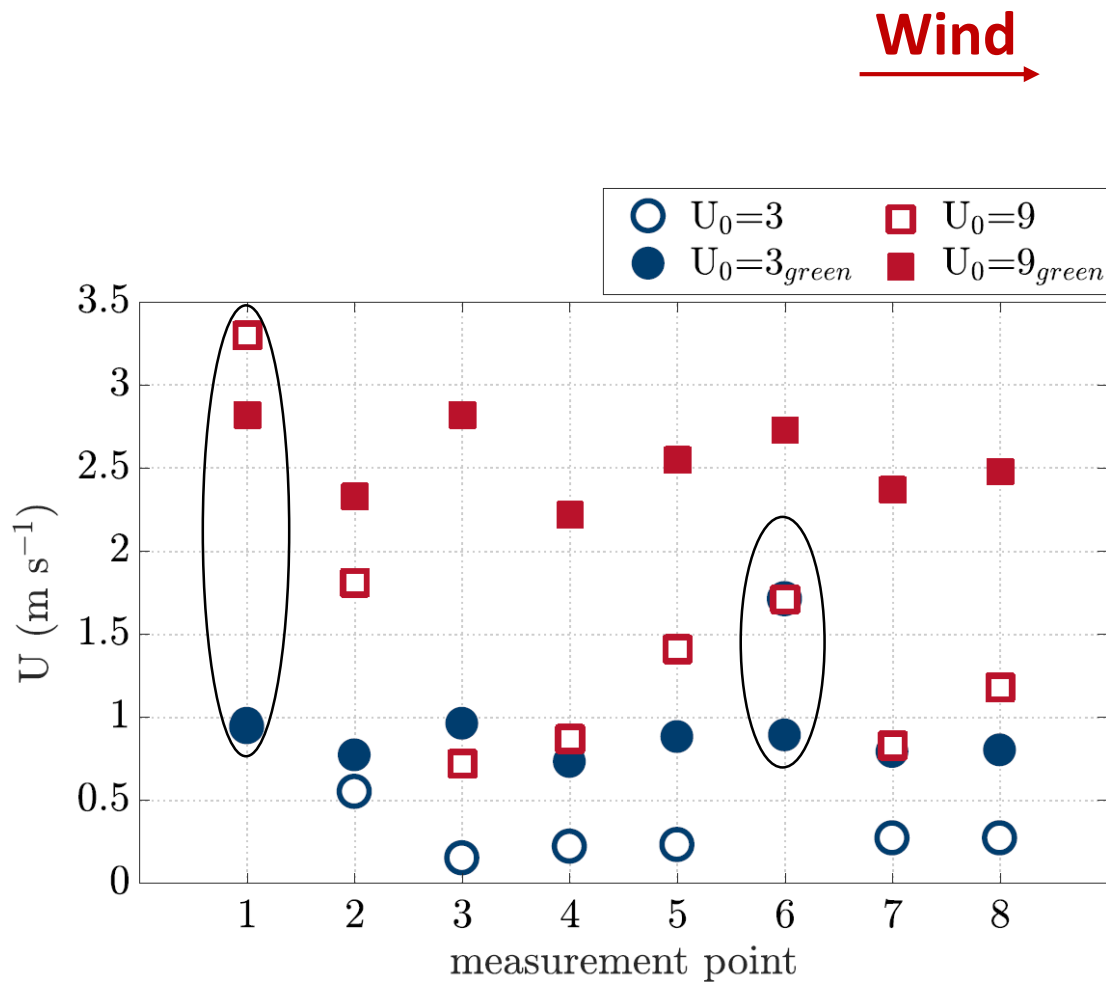
- Inflow wind speed: 3, 6 and 9 m s⁻¹
- Inflow wind direction:
North, West and Southeast
- **replacement of built-up by green areas**



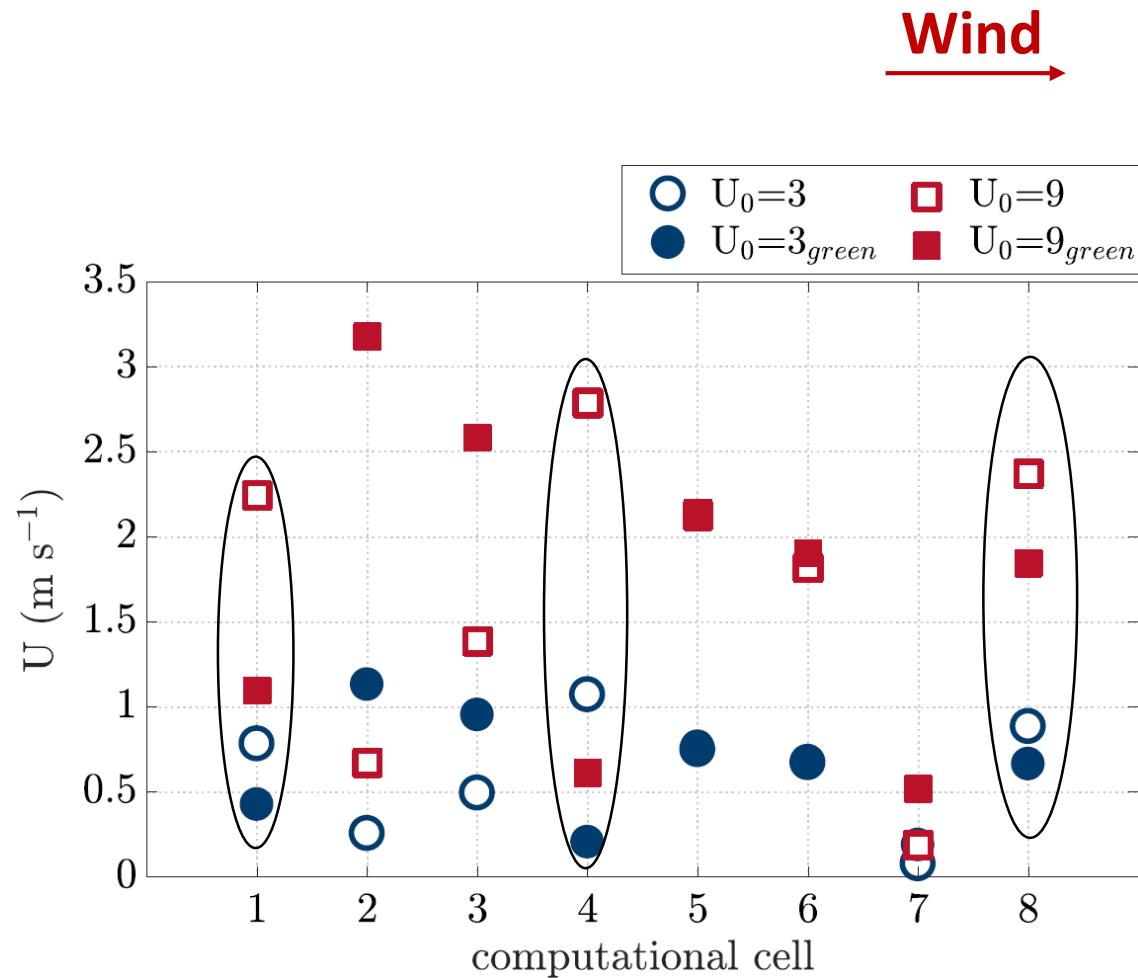
Computational domain



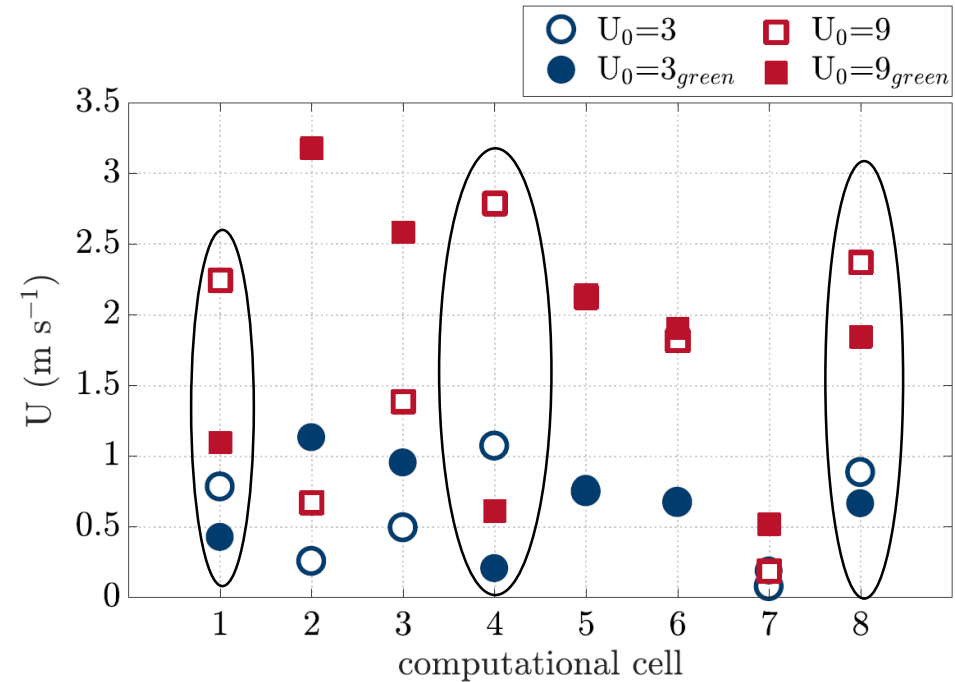
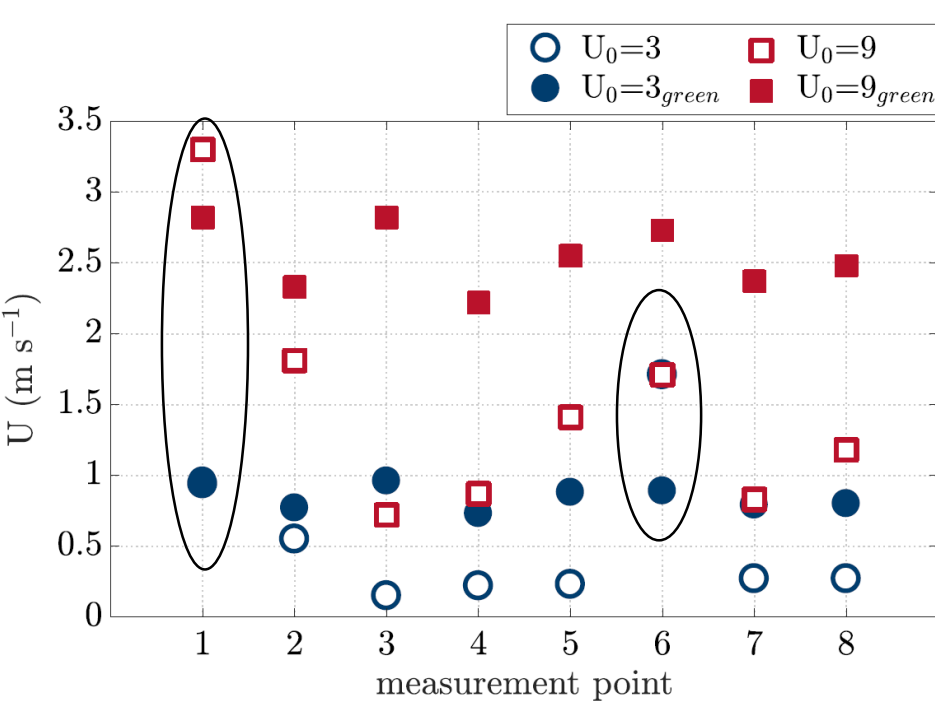
CFD and wind tunnel results



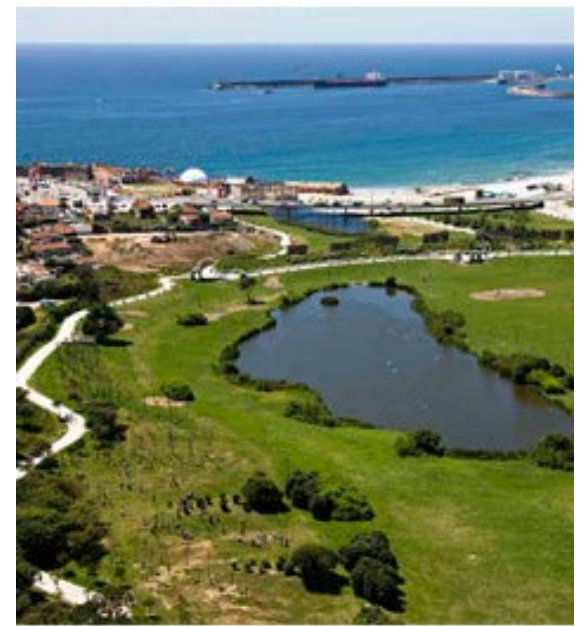
CFD and wind tunnel results



CFD and wind tunnel results

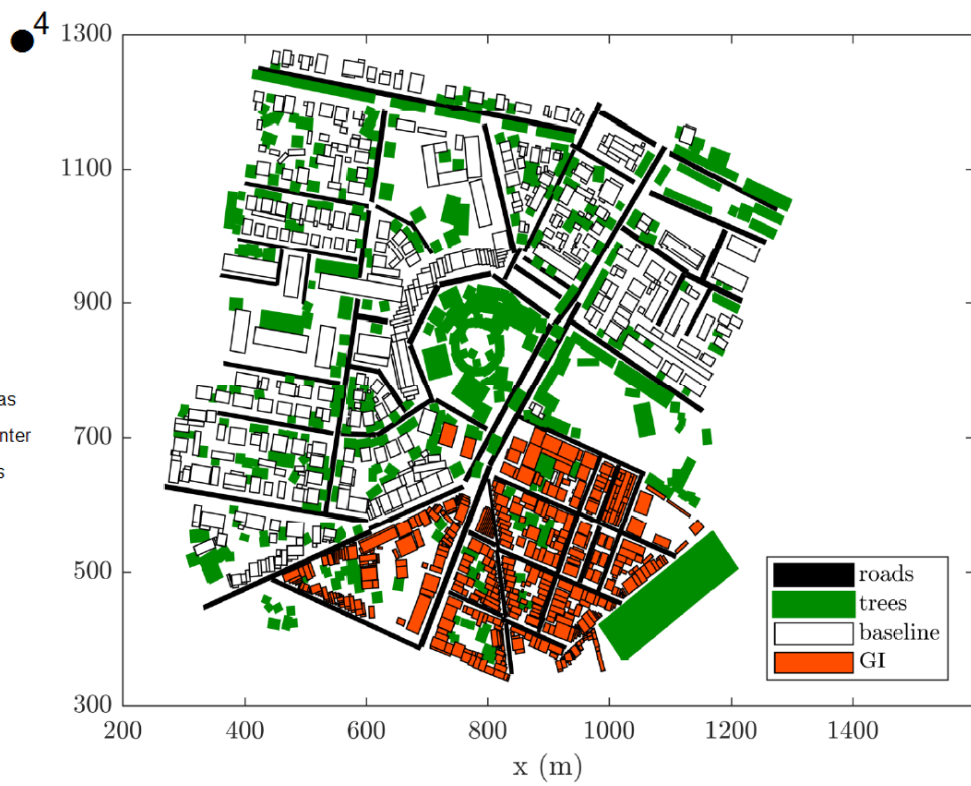
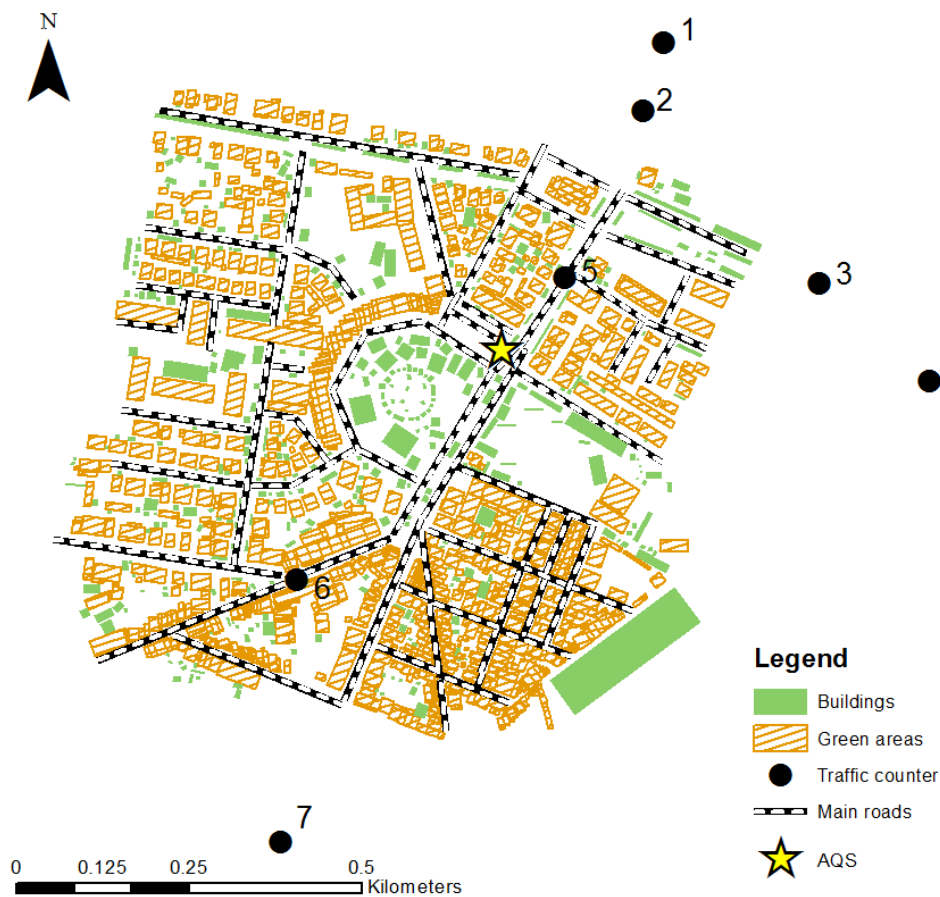


- RMSE for the baseline scenario: 0.5, 0.9 and 1.0 m s⁻¹
- **RMSE for the green scenario: 0.6, 1.3 and 1.4 m s⁻¹**



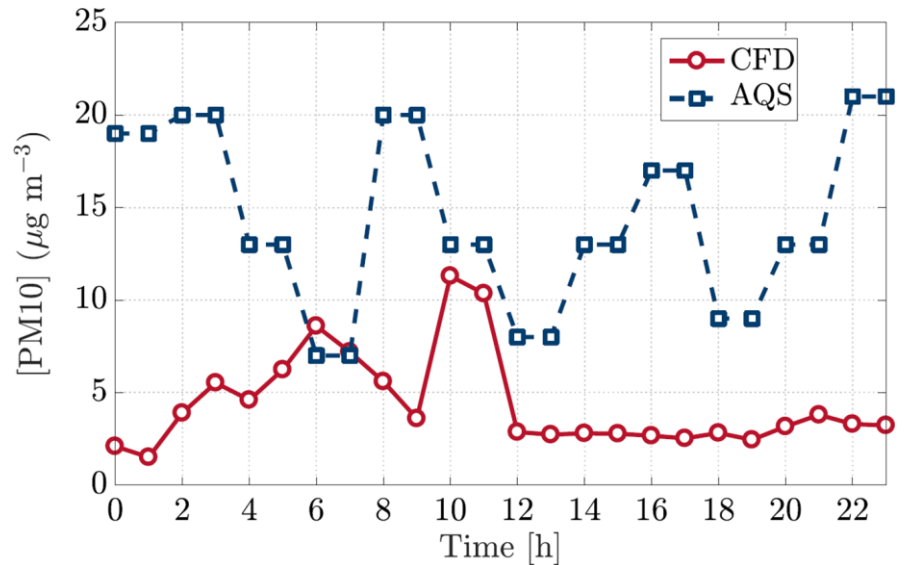
Green infrastructures effects
on air quality

Computational domain



CFD model performance

- PM10 concentrations point out an underestimation by the CFD model
- Hourly PM10 concentrations are below the legal limit value (2008/50/EC Directive) of **50 $\mu\text{g m}^{-3}$**
– daily average value

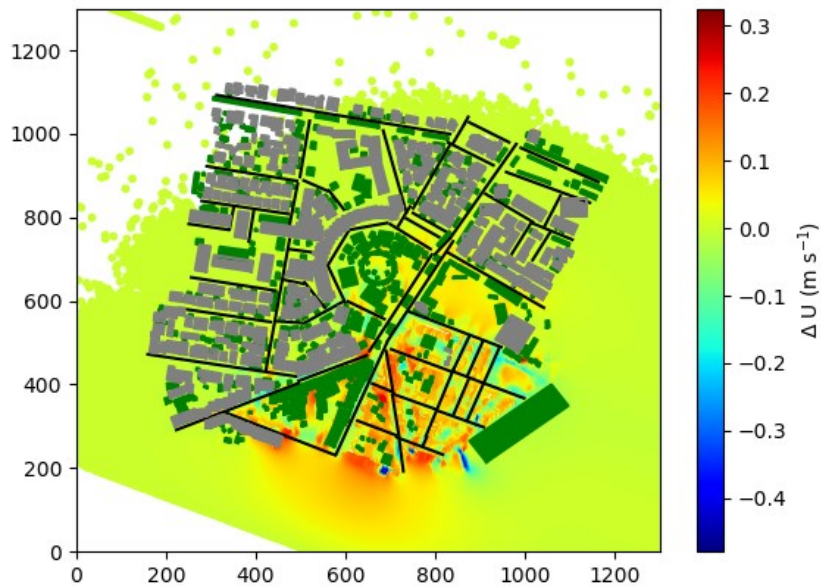




Assessment the effectiveness of Green Infrastructures

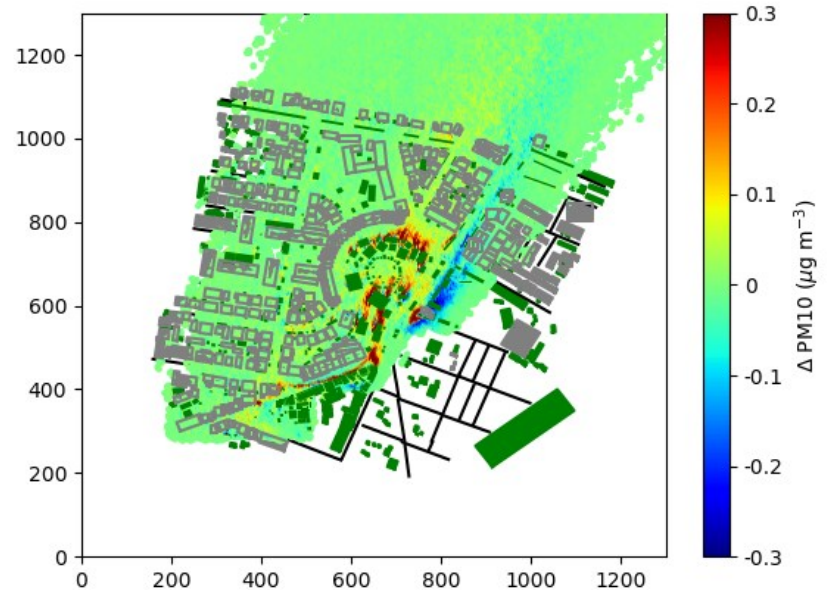


Effects of GI... ... on flow dynamics

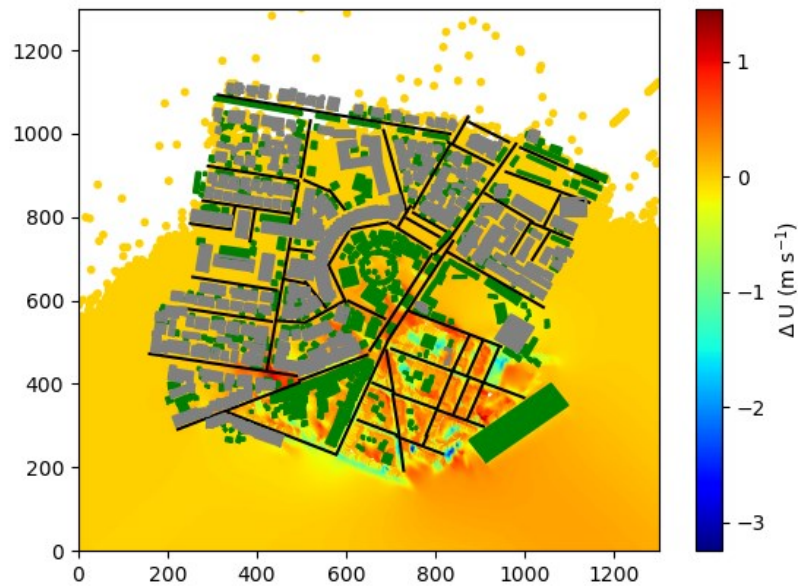


... at 4 a.m.

... on PM10 dispersion

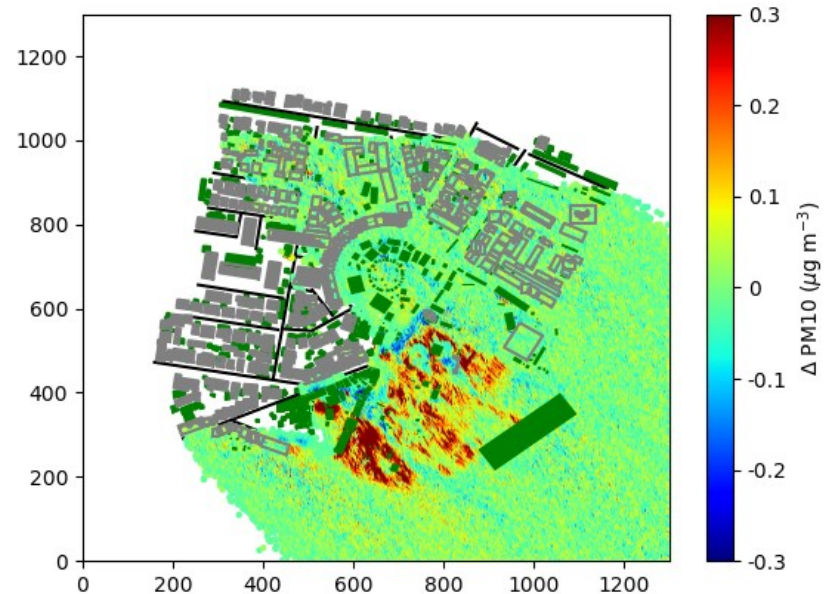


Effects of GI... ... on flow dynamics



... at 8 a.m.

... on PM10 dispersion





Conclusions

- **Air quality may be improved by the presence of GI in Porto's urban area**

PM10 concentration fields depend on the:

- meteorological conditions
- configuration of the local urban area
- presence of green infrastructures
- emissions from road traffic

Increase of Porto's urban area resilience



Harmonisation Regulatory Purposes

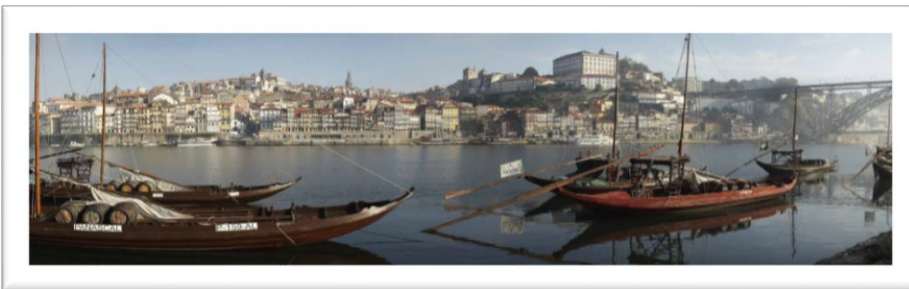
Common tools:

- To foster urban microclimate and pollutants dispersion patterns knowledge
- To assess GI effects on air quality
- To establish a set of guidelines to be disseminated to stakeholders and decision makers
- To promote important social, environmental and economic benefits

The **combination of these different tools** contributes to the development of an **effective procedure** for the characterization of the **turbulent flow dynamics and pollutants dispersion patterns** in urban areas



universidade de aveiro
theoria poiesis praxis



Thank you!

vera.rodrigues@ua.pt

www.ua.pt/gemac

