



Abstract

In conditions of complex terrain, modelling of air pollutant dispersion is a very demanding task, which still has a number of scientific challenges. Ideally, appropriate meteorological data should be available for modelling, which should include the measurements of vertical profiles of wind and temperature, and not just ground-based meteorological information. Unfortunately, for many purposes, such as for example for studies of the impact of industrial plants to the surrounding atmosphere, where it is necessary to analyse the data for at least one year, there is no time to carry out suitable measuring campaigns.

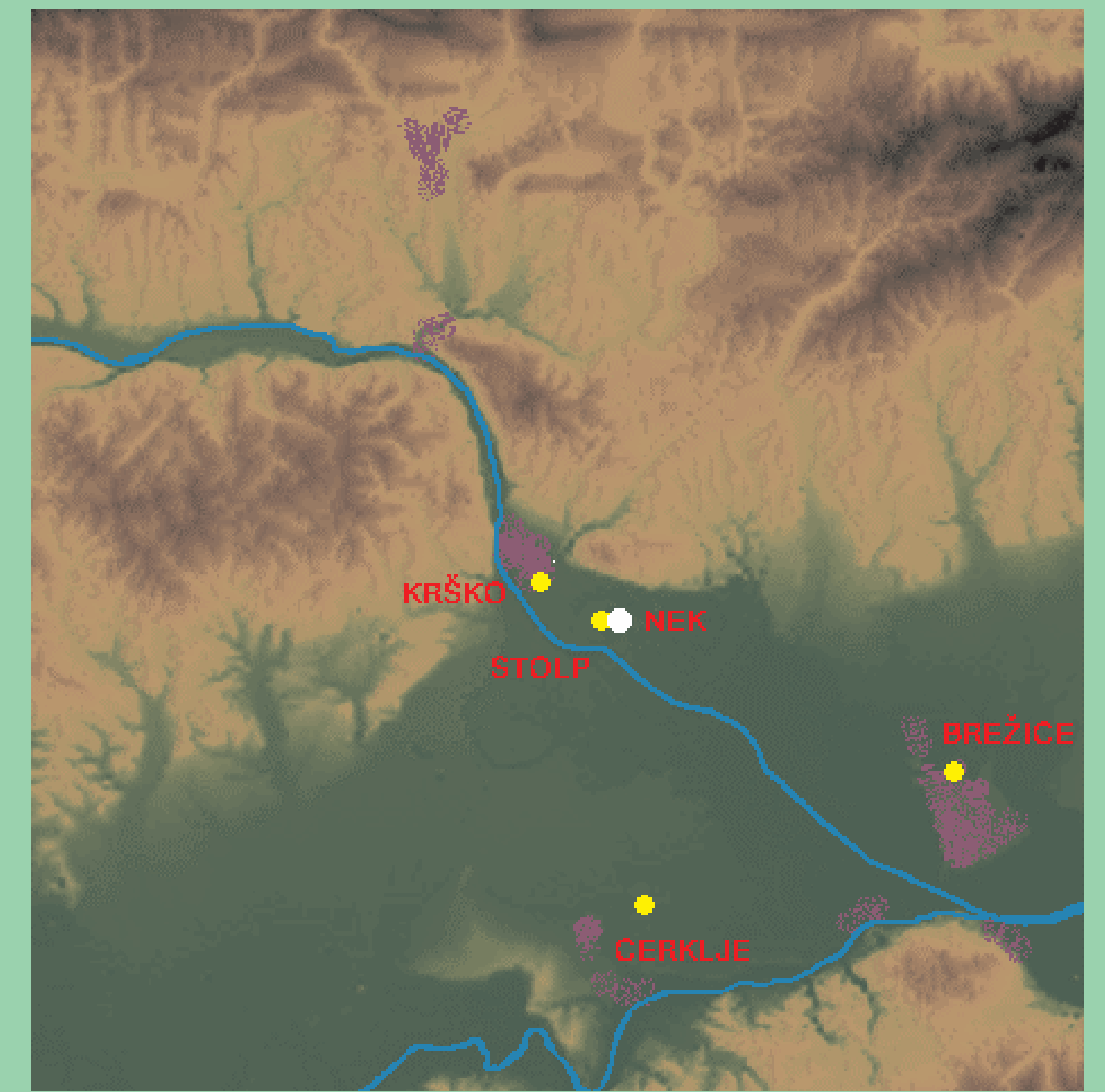
Therefore, instead of measuring the profile and ground-level meteorological parameters, the results of prognostic weather forecasts (NWP models) are being widely used. However, these models still have quite a few disadvantages when their results are used as input for dispersion models over complex terrain.

The study presents the validation of the quality of the weather forecasts in surroundings of Nuclear Power Plant Krško in Slovenia, an area with highly complex terrain and the resulting complex meteorological characteristics.

For air pollution dispersion models, we have developed specially for Slovenia a dedicated forecast of meteorological parameters with the NWP model of WRF and the use of GFS global input data. The forecast takes place in real time and is intended for real-time use for several areas in Slovenia as well as the use of historical data for different studies. For different areas of Slovenia, the forecast takes place in different temporal and spatial resolutions, whereby the finest is available for horizontal resolution of 2 km and half hour temporal interval and seven days in advance.

The predicted meteorological parameters, which are key for the models of air pollutant dispersion, are validated using the measured meteorological parameters. The quality of the forecasts are analysed both qualitatively and quantitatively with the relevant indexes.

Key words: validation, weather forecast, fine spatial and temporal resolution, complex terrain



Introduction

This paper dedicates special attention to a qualitative wind forecast, which is a basic parameter in pollution modelling. An additional parameter, which can lead to an incorrect assessment of the stability of the atmosphere with the wrong forecast, is the forecast of global solar radiation.

The aim of this paper is to demonstrate the quality of the forecast of meteorological parameters, which are important for modelling air pollutants expansion, on an actual example of Slovenia, which is a country with a very complex terrain in the slipstream on the sunny side of the Alps.

Our final goal is that on harmonization initiative we should harmonize criteria how well should be prognostic meteorology prepared when it is used for air pollution dispersion modelling.

Methodology

For validation we have chosen the area in Slovenia in the vicinity of the town of Krško because the Krško Nuclear Power Plant is located there, which takes exemplary care of its meteorological measuring system.

This measuring system includes four ground level meteorological stations at the bottom of a half-open basin, and an additional SODAR station, which provides quality measurements of the wind directions and speed up to 500m above the ground. A MEIS weather forecast system, which gives the forecast for Slovenia for 7 days ahead in half-hour steps, and with a cell sized to 14km, and subsequently it gives the forecast for seven days ahead in half-hour steps with a cell sized to 2km horizontally for a narrower area in the vicinity of Krško is validated. The forecast is also compared to the forecast of the MEIS Koereg model, which gives the forecast for the entire Slovenia for 2 days ahead with a cell sized to 4km horizontally. The forecasts in all the examples is performed with the WRF model and global American input GFS data. (Mlakar et al., 2014, Mlakar et al., 2015).

We focused on the first day of the forecast in the validation for all three modules. However, we are of course aware that in the event of the validation of the forecast for several days ahead, the quality of the forecast would diminish. According to our opinion, the forecast validation for the first day is also a solid assessment for the validation of reanalyses.

We used one year of forecasts and one year of measured data from the meteorological station at the location of the Krško Nuclear Power Plant, SODAR provided data only for six months within the chosen one-year-period interval due to a breakdown. Firstly, we validated the forecasts of the basic meteorological quantities for the bottom layer of the atmosphere. Validation of precipitation is a particular problem. Validation concluded with the validation of wind at higher altitudes. We use the traditional numeric estimators: RMSE (root-mean-square error), PCC (Pearson's correlation coefficient), MFB (mean fractional bias), FAC2 (The factor of the modelled values within a factor of two of the observations) and SMSE (standardized mean-squared error) as defined in the paper by Kocijan et al. (2016).

Results

In tables 1–12, we firstly gathered the values for the basic meteorological parameters, predicted with three different configurations of the WRF model (configurations are marked based on the horizontal size of the cells). Data are also shown on scatter plots.

CONCLUSION

This paper presents the validation of forecasting the basic meteorological parameters, used for atmospheric dispersion modelling. Validation has been carried out with the measured data at the location of the Krško Nuclear Power Plant

in Slovenia with a very complex terrain, which makes the modelling much more difficult. Both ground measurements and also SODAR measurements of the vertical profile of the wind were used for the validation. The values for the first day of forecast are subject to validation. We have shown that the forecasts are good most

of the time, we only have to be slightly more careful in the interpretation of the wind direction, and the speed of the ground wind, and also with the interpretation of precipitation, which is generally still a major challenge for the NWP models.

Table 1. Temperature validation results at 2m

MODEL	PCC	RMSE	MFB	FAC 2	SMSE
WRF 4 x 4 km	0.97	2.38	0.047	0.87	0.07
WRF 2 x 2 km	0.97	2.52	0.073	0.86	0.08
WRF 14 x 14 km	0.97	2.75	0.127	0.85	0.09

Table 2. Temperature validation results at 10m

MODEL	PCC	RMSE	MFB	FAC 2	SMSE
WRF 4 x 4 km	0.97	2.55	0.042	0.87	0.08
WRF 2 x 2 km	0.96	2.77	0.114	0.86	0.10
WRF 14 x 14 km	0.97	3.01	0.198	0.84	0.12

Table 3. Relative air humidity validation results at 2m

MODEL	PCC	RMSE	MFB	FAC 2	SMSE
WRF 4 x 4 km	0.68	15.86	0.065	0.99	0.65
WRF 2 x 2 km	0.71	14.61	0.034	0.99	0.55
WRF 14 x 14 km	0.72	13.91	0.010	0.99	0.50

Table 4. Air pressure validation results

MODEL	PCC	RMSE	MFB	FAC 2	SMSE
WRF 4 x 4 km	0.994	2.09	0.002	1.00	0.08
WRF 2 x 2 km	0.991	4.42	0.004	1.00	0.37
WRF 14 x 14 km	0.918	18.63	0.019	1.00	6.52

Table 5. Global solar radiation validation results

MODEL	PCC	RMSE	MFB	FAC 2	SMSE
WRF 4 x 4 km	0.92	111.87	0.945	0.69	0.20
WRF 2 x 2 km	0.92	113.83	0.974	0.68	0.21
WRF 14 x 14 km	0.92	113.11	0.945	0.69	0.21

Table 6. Precipitation validation results

MODEL	PCC	RMSE	MFB	FAC 2	SMSE
WRF 4 x 4 km	0.20	0.43	0.017	0.30	1.21
WRF 2 x 2 km	0.18	0.44	0.019	0.34	1.25
WRF 14 x 14 km	0.30	0.39	-0.056	0.26	1.00

Table 7. Wind velocity validation results at the height of 10m

MODEL	PCC	RMSE	MFB	FAC 2	SMSE
WRF 4 x 4 km	0.58	1.50	-0.305	0.60	1.88
WRF 2 x 2 km	0.52	1.44	-0.234	0.58	1.74
WRF 14 x 14 km	0.54	1.66	-0.507	0.56	2.30

Table 8. Wind direction validation results at the height of 10m

MODEL	PCC	RMSE	MFB	FAC 2	SMSE
WRF 4 x 4 km	0.45	104.85	0.101	-0.71	1.16
WRF 2 x 2 km	0.41	110.76	0.056	0.71	1.29
WRF 14 x 14 km	0.41	115.41	0.153	0.67	1.41

Table 9. Wind velocity validation results at the height of 220m (SODAR measurements)

MODEL	PCC	RMSE	MFB	FAC 2	SMSE
WRF 2 x 2 km	0.65	3.99	-0.507	0.57	2.04
WRF 14 x 14 km	0.64	4.76	-0.628	0.49	2.90
WRF 4 x 4 km	0.65	3.89	-0.476	0.57	1.94

Table 10. Wind direction validation results at the height of 220m (SODAR measurements)

MODEL	PCC	RMSE	MFB	FAC 2	SMSE
WRF 4 x 4 km	0.62	89.35	0.021	0.77	0.78
WRF 2 x 2 km	0.60	91.57	0.006	0.78	0.82
WRF 14 x 14 km	0.60	91.35	0.030	0.77	0.81

Table 11. Wind velocity validation results at the height of 440m (SODAR measurements)

MODEL	PCC	RMSE	MFB	FAC 2	SMSE
WRF 4 x 4 km	0.65	4.78	-0.303	0.71	1.56
WRF 2 x 2 km	0.70	4.94	-0.371	0.68	1.67
WRF 14 x 14 km	0.71	4.36	-0.287	0.72	1.30

Table 12. Wind direction validation results at the height of 440m (SODAR measurements)

MODEL	PCC	RMSE	MFB	FAC 2	SMSE
WRF 4 x 4 km	0.71	61.31	0.026	0.83	0.34
WRF 2 x 2 km	0.72	59.11	0.015	0.83	0.32
WRF 14 x 14 km	0.71	59.81	0.017	0.82	0.33

