

**UNIVERSITY OF  
BIRMINGHAM**

# **U REGULATORY MODELLING FOR ASSESSING AIR QUALITY IN STREET CANYONS IN THE U.K. B**

**Sotiris Vardoulakis, Helen ApSimon,  
Marios Valiantis, James Milner, Terry Ellis**

## **Current Practice**

- Air Quality Review & Assessment Process for UK Local Authorities
- Over 130 Air Quality Management Areas declared (NO<sub>2</sub> and PM<sub>10</sub> roadside hotspots)
- Dispersion Manual for Roads and Bridges (DMRB) for screening assessment
- Advanced modelling and monitoring for detailed assessment

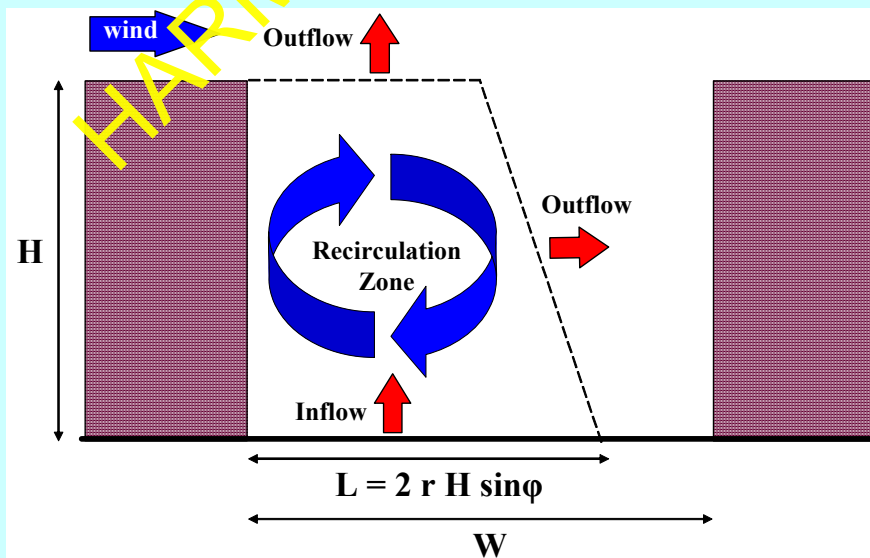
**UNIVERSITY OF  
BIRMINGHAM**

## Operational Models

- **WinOSPM** (NERI, Denmark)
- **AEOLIUS** Screen, Emission, and Full (Met Office, UK)
- **ADMS-Urban 2.0** (CERC, UK)
- **CAR** International (TNO, Netherlands)
- **STREET** (Stratford Research Institute, USA)

UNIVERSITY OF  
BIRMINGHAM

## Model Parameterisation



## Input Requirements

- Street dimensions and orientation
- Receptor location (height & distance)
- Met data (wind, temperature, cloud cover, global radiation, atmospheric pressure)
- Vehicle emission factors (EFT with cold starts)
- Vehicle fleet composition (small/large)
- Vehicle counts and average vehicle speed
- Background concentrations
- NO<sub>x</sub> – NO<sub>2</sub> chemistry scheme

UNIVERSITY OF  
BIRMINGHAM

## Case Studies

Most modelling studies deal with ideal street canyons – but in reality urban canyons are very complex!

- **Stratford Road** (Birmingham)

H/W = 0.5

AADT = 29000

- **Marylebone Road** (London)

H/W = 0.5

AADT = 76000

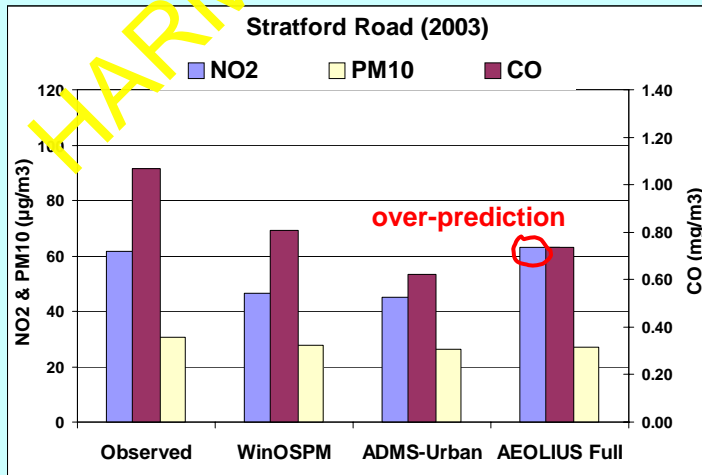
UNIVERSITY OF  
BIRMINGHAM

# (1) Stratford Road



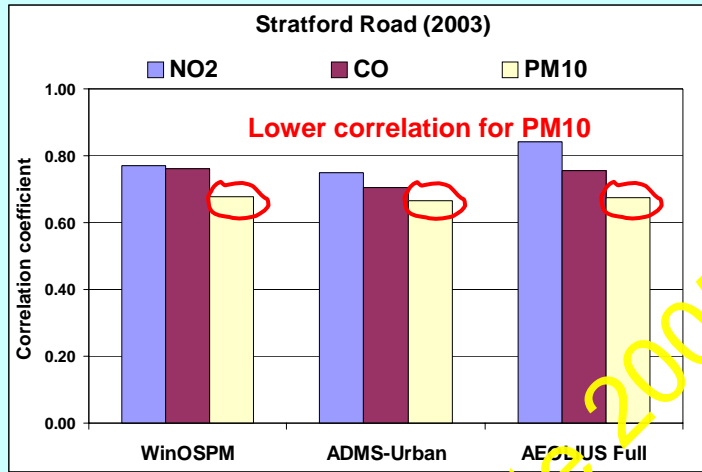
UNIVERSITY OF BIRMINGHAM

## Annual mean concentrations – 1



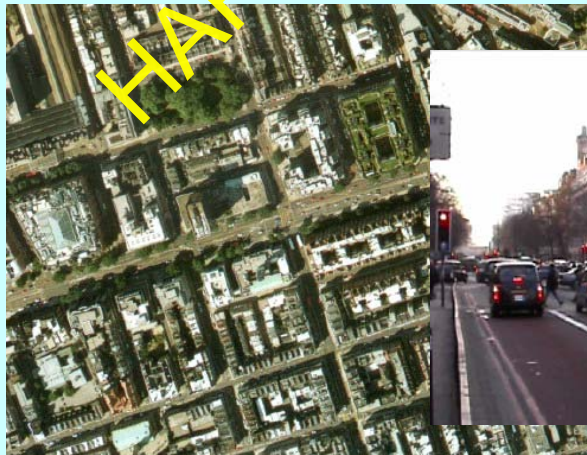
UNIVERSITY OF BIRMINGHAM

## Correlation with measurements – 1



UNIVERSITY OF  
BIRMINGHAM

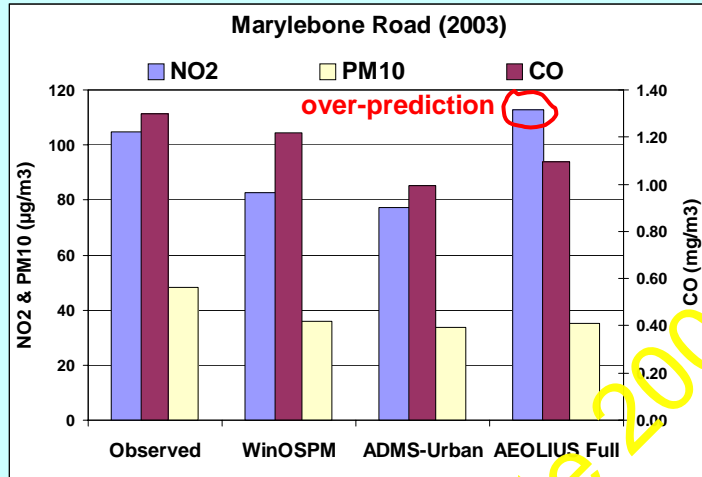
## (2) Marylebone Road



UNIVERSITY OF  
BIRMINGHAM

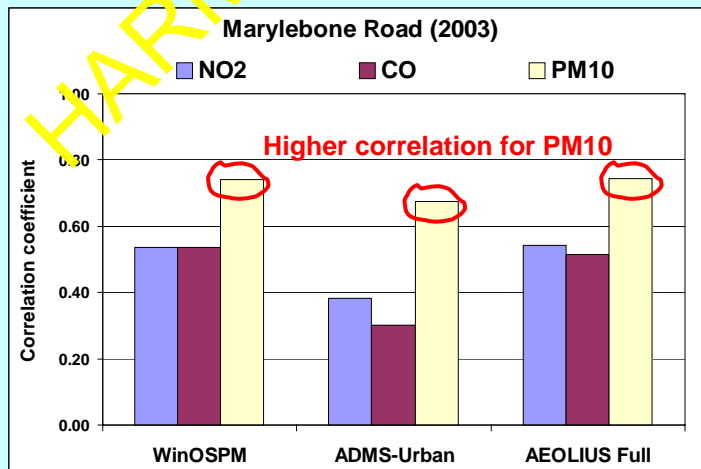
<http://www.airpollution.org.uk/dapple/>

## Annual mean concentrations – 2



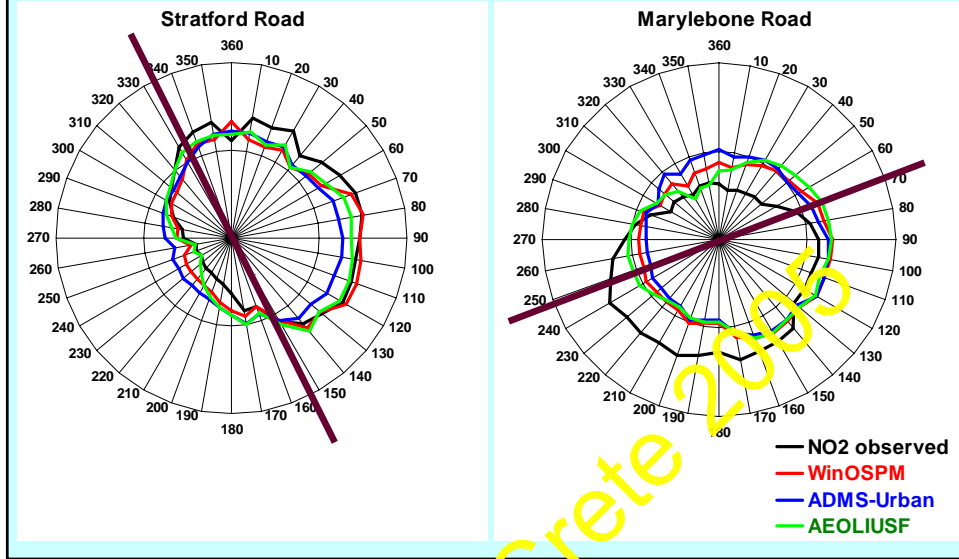
UNIVERSITY OF  
BIRMINGHAM

## Correlation with measurements – 2

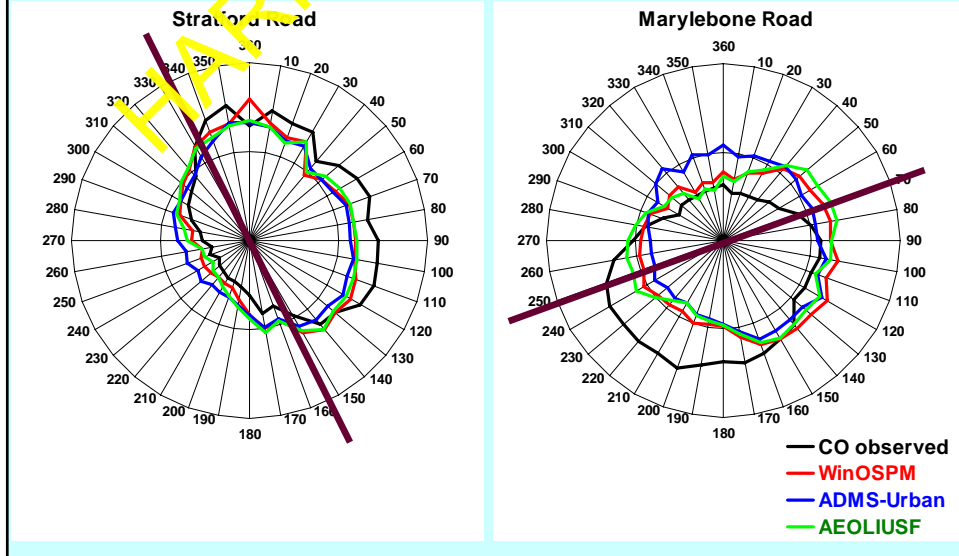


UNIVERSITY OF  
BIRMINGHAM

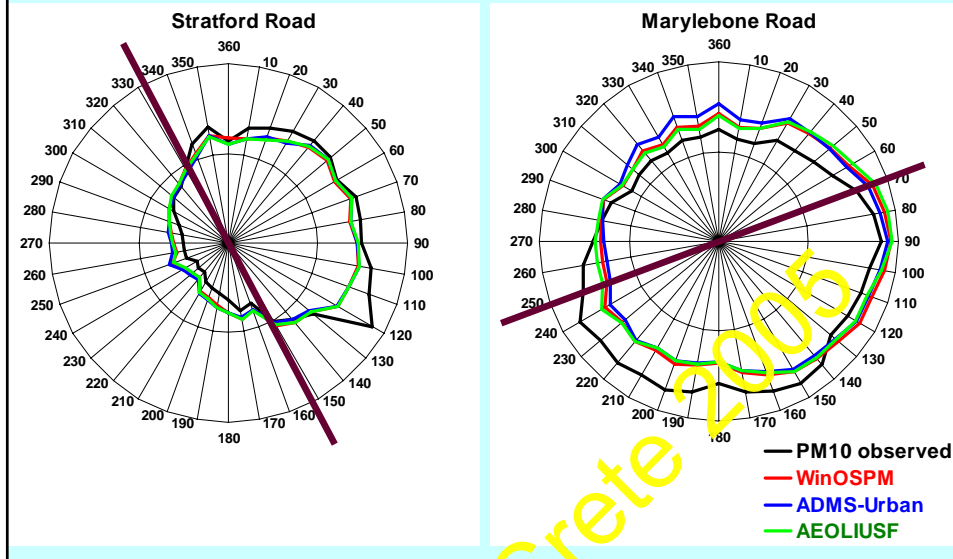
## Wind Direction – NO<sub>2</sub>



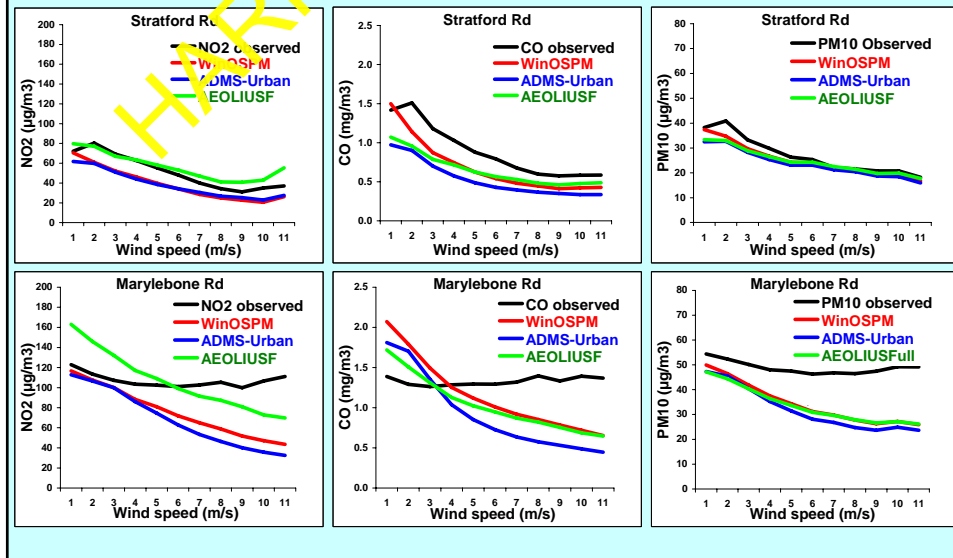
## Wind Direction – CO



## Wind Direction – PM<sub>10</sub>



## Wind Speed





## Conclusions and future work

- Street canyons have been associated with exceedences of air quality objectives in UK
- Several screening and advanced models available (WinOSPM, ADMS-Urban, AEOLIUS Full)
- Tested models in reasonable agreement with measurements from two low-rise canyons, but...
- Modelling results as good as input data and corresponding assumptions
- Further work on pollutant dispersion in low-rise canyons and urban intersections (traffic-induced turbulence during congestion, particle re-suspension, etc.)

**UNIVERSITY OF  
BIRMINGHAM**

## Acknowledgments

- British Atmospheric Data Centre (BADC)
- UK National Air Quality Archive
- Birmingham City Council
- City of Westminster
- Environmental Research Group (KCL)
- David Carruthers, Duncan Laxen, Ruwin Berkowicz and Doug Middleton

***Thank you!***

***s.vardoulakis@bham.ac.uk***

**UNIVERSITY OF  
BIRMINGHAM**