

Development of the micro-scale Lagrangian particle dispersion model MicroSpray for the simulation of two-phase releases

Luca Mortarini¹, Domenico Anfossi¹, Silvia Trini Castelli¹
Giuseppe Carlino²
Gianni Tinarelli³, Lorenzo Mauri³

¹Institute of Atmospheric Sciences and Climate - CNR, Italy

²Simularia, S.r.l., Italy

³Arianet, S.r.l., Italy

`l.mortarini@isac.cnr.it`

October 5, 2011



Introduction

The aim of this work is providing a new module for the MicroSpray model, able to deal with two-phase (vapor - liquid) releases of *Toxic Industrial Chemicals*.

Required New Features

Introduction

The aim of this work is providing a new module for the MicroSpray model, able to deal with two-phase (vapor - liquid) releases of *Toxic Industrial Chemicals*.

Required New Features

- aerosol evaporation

Introduction

The aim of this work is providing a new module for the MicroSpray model, able to deal with two-phase (vapor - liquid) releases of *Toxic Industrial Chemicals*.

Required New Features

- aerosol evaporation
- latent heat processes

Introduction

The aim of this work is providing a new module for the MicroSpray model, able to deal with two-phase (vapor - liquid) releases of *Toxic Industrial Chemicals*.

Required New Features

- aerosol evaporation
- latent heat processes
- positive or negative buoyancy

Introduction

The aim of this work is providing a new module for the MicroSpray model, able to deal with two-phase (vapor - liquid) releases of *Toxic Industrial Chemicals*.

Required New Features

- aerosol evaporation
- latent heat processes
- positive or negative buoyancy
- plumes with arbitrarily oriented momentum

Introduction

The aim of this work is providing a new module for the MicroSpray model, able to deal with two-phase (vapor - liquid) releases of *Toxic Industrial Chemicals*.

Required New Features

- aerosol evaporation
- latent heat processes
- positive or negative buoyancy
- plumes with arbitrarily oriented momentum
- continuous and instantaneous emissions

Introduction

The aim of this work is providing a new module for the MicroSpray model, able to deal with two-phase (vapor - liquid) releases of *Toxic Industrial Chemicals*.

Required New Features

- aerosol evaporation
- latent heat processes
- positive or negative buoyancy
- plumes with arbitrarily oriented momentum
- continuous and instantaneous emissions
- time varying sources

Introduction

The aim of this work is providing a new module for the MicroSpray model, able to deal with two-phase (vapor - liquid) releases of *Toxic Industrial Chemicals*.

Required New Features

- aerosol evaporation
- latent heat processes
- positive or negative buoyancy
- plumes with arbitrarily oriented momentum
- continuous and instantaneous emissions
- time varying sources
- elevated and ground level emissions

Introduction

The aim of this work is providing a new module for the MicroSpray model, able to deal with two-phase (vapor - liquid) releases of *Toxic Industrial Chemicals*.

Required New Features

- aerosol evaporation
- latent heat processes
- positive or negative buoyancy
- plumes with arbitrarily oriented momentum
- continuous and instantaneous emissions
- time varying sources
- elevated and ground level emissions
- cloud spread at the ground due to gravity

Introduction

The aim of this work is providing a new module for the MicroSpray model, able to deal with two-phase (vapor - liquid) releases of *Toxic Industrial Chemicals*.

Required New Features

- aerosol evaporation
- latent heat processes
- positive or negative buoyancy
- plumes with arbitrarily oriented momentum
- continuous and instantaneous emissions
- time varying sources
- elevated and ground level emissions
- cloud spread at the ground due to gravity
- modified bouncing against obstacles and particle reflection at the domain bottom due to the cloud density

MicroSpray

MicroSpray is a Lagrangian particle dispersion model based on a 3D form of the Langevin equation for the random velocity (Thomson, 1987).

MicroSpray

MicroSpray is a Lagrangian particle dispersion model based on a 3D form of the Langevin equation for the random velocity (Thomson, 1987).

The position of each particle is given by:

$$dx_i = (\overline{u_{ai}} + \quad + \quad) dt$$

mean wind velocity

MicroSpray

MicroSpray is a Lagrangian particle dispersion model based on a 3D form of the Langevin equation for the random velocity (Thomson, 1987).

The position of each particle is given by:

$$dx_i = (\overline{u_{ai}} + u'_i + \dots) dt$$

mean wind velocity

turbulent velocity

MicroSpray

MicroSpray is a Lagrangian particle dispersion model based on a 3D form of the Langevin equation for the random velocity (Thomson, 1987).

The position of each particle is given by:

$$dx_i = (\overline{u_{ai}} + u'_i + u_{bi})dt$$

mean wind velocity

turbulent velocity

thermodynamics and buoyancy effects

Definition of the problem

Taking into account the physics of aerosols implies the introduction of the liquid phase of the contaminant and, if necessary, of the water vapor entrained.

Definition of the problem

Taking into account the physics of aerosols implies the introduction of the liquid phase of the contaminant and, if necessary, of the water vapor entrained.

- After the flashing the pollutant cloud is mostly vapor by volume and liquid by mass.

Definition of the problem

Taking into account the physics of aerosols implies the introduction of the liquid phase of the contaminant and, if necessary, of the water vapor entrained.

- After the flashing the pollutant cloud is mostly vapor by volume and liquid by mass.
- Entrainment of ambient air produces a decreasing of the cloud partial pressure and hence a cooling of the mixture below its boiling point.

Definition of the problem

Taking into account the physics of aerosols implies the introduction of the liquid phase of the contaminant and, if necessary, of the water vapor entrained.

- After the flashing the pollutant cloud is mostly vapor by volume and liquid by mass.
- Entrainment of ambient air produces a decreasing of the cloud partial pressure and hence a cooling of the mixture below its boiling point.
- On the other hand the ambient water releases latent heat during condensation, heating up the cloud.

Definition of the problem

Taking into account the physics of aerosols implies the introduction of the liquid phase of the contaminant and, if necessary, of the water vapor entrained.

- After the flashing the pollutant cloud is mostly vapor by volume and liquid by mass.
- Entrainment of ambient air produces a decreasing of the cloud partial pressure and hence a cooling of the mixture below its boiling point.
- On the other hand the ambient water releases latent heat during condensation, heating up the cloud.
- With the entrainment of ambient air the liquid will vaporize, cooling the cloud and, when the gas is all vapor, the plume will be cold enough to be a **heavy gas**.

Definition of the problem

Taking into account the physics of aerosols implies the introduction of the liquid phase of the contaminant and, if necessary, of the water vapor entrained.

- After the flashing the pollutant cloud is mostly vapor by volume and liquid by mass.
- Entrainment of ambient air produces a decreasing of the cloud partial pressure and hence a cooling of the mixture below its boiling point.
- On the other hand the ambient water releases latent heat during condensation, heating up the cloud.
- With the entrainment of ambient air the liquid will vaporize, cooling the cloud and, when the gas is all vapor, the plume will be cold enough to be a **heavy gas**.
- Subsequent entrainment will warm the cloud until it asymptotically reaches the ambient pressure.

Mass Conservations Equations

$$\frac{d}{dt} \left[\frac{\rho_p}{\rho_a} u_s b^2 \right] = E u_s \quad (2)$$

Glendening, J.W., J.A. Businger, and R.J. Farber (1984)

Mass Conservations Equations

$$m_{vc} + m_{lc} + m_{vw} + m_{lw} + m_{da} = 1 \quad (1)$$

$$\frac{d}{dt} \left[\frac{\rho_p}{\rho_a} u_s b^2 \right] = E u_s \rightarrow \left\{ \quad (2) \right.$$

Mass Conservations Equations

$$m_{vc} + m_{lc} + m_{vw} + m_{lw} + m_{da} = 1 \quad (1)$$

contaminant mass conservation

$$\frac{d}{dt} \left[\frac{\rho_p}{\rho_a} u_s b^2 \right] = E u_s \rightarrow \left\{ \begin{array}{l} \frac{d}{dt} \left[\frac{\rho_p}{\rho_a} (m_{vc} + m_{lc}) u_s b^2 \right] = 0 \end{array} \right. \quad (2)$$

Mass Conservations Equations

$$m_{vc} + m_{lc} + m_{vw} + m_{lw} + m_{da} = 1 \quad (1)$$

contaminant mass conservation

water mass conservation

$$\frac{d}{dt} \left[\frac{\rho_p}{\rho_a} u_s b^2 \right] = E u_s \rightarrow \begin{cases} \frac{d}{dt} \left[\frac{\rho_p}{\rho_a} (m_{vc} + m_{lc}) u_s b^2 \right] = 0 \\ \frac{d}{dt} \left[\frac{\rho_p}{\rho_a} (m_{vw} + m_{lw}) u_s b^2 \right] = m_{aw} E u_s \end{cases} \quad (2)$$

Mass Conservations Equations

$$m_{vc} + m_{lc} + m_{vw} + m_{lw} + m_{da} = 1 \quad (1)$$

contaminant mass conservation

water mass conservation

dry air mass conservation

$$\frac{d}{dt} \left[\frac{\rho_p}{\rho_a} u_s b^2 \right] = Eu_s \rightarrow \begin{cases} \frac{d}{dt} \left[\frac{\rho_p}{\rho_a} (m_{vc} + m_{lc}) u_s b^2 \right] = 0 \\ \frac{d}{dt} \left[\frac{\rho_p}{\rho_a} (m_{vw} + m_{lw}) u_s b^2 \right] = m_{aw} Eu_s \\ \frac{d}{dt} \left[\frac{\rho_p}{\rho_a} m_{da} u_s b^2 \right] = (1 - m_{aw}) Eu_s \end{cases} \quad (2)$$

Momenta Conservation

Vertical momentum conservation

$$\frac{d}{dt} \left[\frac{\rho_p}{\rho_a} u_s b^2 w_p \right] = g \frac{\rho_p - \rho_a}{\rho_p} b^2 u_s \quad (3)$$

Glendening, J.W., J.A. Businger, and R.J. Farber (1984)

Momenta Conservation

Vertical momenta conservation

$$\frac{d}{dt} \left[\frac{\rho_p}{\rho_a} u_s b^2 w_p \right] = g \frac{\rho_p - \rho_a}{\rho_p} b^2 u_s \quad (3)$$

Horizontal momenta conservation

$$\frac{d}{dt} \left[\frac{\rho_p}{\rho_a} u_s b^2 u_p \right] = E u_s u_a \quad (4)$$

$$\frac{d}{dt} \left[\frac{\rho_p}{\rho_a} u_s b^2 v_p \right] = E u_s v_a \quad (5)$$

Glendening, J.W., J.A. Businger, and R.J. Farber (1984)

Anfossi et al., 2010 A new Lagrangian particle model for the simulation of dense gas dispersion. Atmospheric Environment 44, 753-762

Momenta Conservation

Vertical momenta conservation

$$\frac{d}{dt} \left[\frac{\rho_p}{\rho_a} u_s b^2 w_p \right] = g \frac{\rho_p - \rho_a}{\rho_p} b^2 u_s \quad (3)$$

Horizontal momenta conservation

$$\frac{d}{dt} \left[\frac{\rho_p}{\rho_a} u_s b^2 u_p \right] = E u_s u_a - C_g u_p b (u_a - u_p)^2 \quad (4)$$

$$\frac{d}{dt} \left[\frac{\rho_p}{\rho_a} u_s b^2 v_p \right] = E u_s u_a - C_g v_p b (v_a - v_p)^2 \quad (5)$$

Drag term

Homogeneous Equilibrium Assumption

The liquid and gas phases are assumed in thermodynamic equilibrium at a temperature $T(t)$ which evolves with time.

Homogeneous Equilibrium Assumption

The liquid and gas phases are assumed in thermodynamic equilibrium at a temperature $T(t)$ which evolves with time.

If the cloud starts off as pure contaminant, its temperature must be close to its boiling point

Homogeneous Equilibrium Assumption

The liquid and gas phases are assumed in thermodynamic equilibrium at a temperature $T(t)$ which evolves with time.

If the cloud starts off as pure contaminant, its temperature must be close to its boiling point \rightarrow the equilibrium in the vapor phase requires that as air is entrained the partial pressure of the contaminant will drop

Homogeneous Equilibrium Assumption

The liquid and gas phases are assumed in thermodynamic equilibrium at a temperature $T(t)$ which evolves with time.

If the cloud starts off as pure contaminant, its temperature must be close to its boiling point \rightarrow the equilibrium in the vapor phase requires that as air is entrained the partial pressure of the contaminant will drop \rightarrow The equilibrium between liquid and gas phases requires that this partial pressure is the saturated vapor pressure, P_{cs} , at the cloud temperature $T(t)$

Homogeneous Equilibrium Assumption

The liquid and gas phases are assumed in thermodynamic equilibrium at a temperature $T(t)$ which evolves with time.

If the cloud starts off as pure contaminant, its temperature must be close to its boiling point \rightarrow the equilibrium in the vapor phase requires that as air is entrained the partial pressure of the contaminant will drop \rightarrow The equilibrium between liquid and gas phases requires that this partial pressure is the saturated vapor pressure, P_{cs} , at the cloud temperature $T(t)$ \rightarrow As the cloud dilutes then the temperature must drop further and further.

Homogeneous Equilibrium Assumption

The liquid and gas phases are assumed in thermodynamic equilibrium at a temperature $T(t)$ which evolves with time.

If the cloud starts off as pure contaminant, its temperature must be close to its boiling point \rightarrow the equilibrium in the vapor phase requires that as air is entrained the partial pressure of the contaminant will drop \rightarrow The equilibrium between liquid and gas phases requires that this partial pressure is the saturated vapor pressure, P_{cs} , at the cloud temperature $T(t)$ \rightarrow As the cloud dilutes then the temperature must drop further and further.

the warm air entrained significantly cools down the cloud.

Homogeneous Equilibrium Assumption

The liquid and gas phases are assumed in thermodynamic equilibrium at a temperature $T(t)$ which evolves with time.

If the cloud starts off as pure contaminant, its temperature must be close to its boiling point \rightarrow the equilibrium in the vapor phase requires that as air is entrained the partial pressure of the contaminant will drop \rightarrow The equilibrium between liquid and gas phases requires that this partial pressure is the saturated vapor pressure, P_{cs} , at the cloud temperature $T(t)$ \rightarrow As the cloud dilutes then the temperature must drop further and further.

the warm air entrained significantly cools down the cloud.

The coldness of the cloud is as important as the molecular weight of the contaminant in determining its density.

Homogeneous Equilibrium Assumption (Sykes et alii, 1998)

$$m_{vc} = \frac{P_{cs}(T_p)M_c}{P_a M_v} \quad (6)$$

$$m_{vw} = \frac{P_{cs}(T_p)M_w}{P_a M_v} \quad (7)$$

Homogeneous Equilibrium Assumption (Sykes et alii, 1998)

$$m_{vc} = \frac{P_{cs}(T_p)M_c}{P_a M_v} \quad (6)$$

$$m_{vw} = \frac{P_{cs}(T_p)M_w}{P_a M_v} \quad (7)$$

Energy conservation

$$\frac{d}{dt} (\rho_p C_p u_s b^2 T_p) = \frac{d}{dt} [\rho_p u_s b^2 (m_{lc} L_c + m_{lw} L_w)] + C_a T_a \rho_a E u_s \quad (8)$$

Homogeneous Equilibrium Assumption (Sykes et alii, 1998)

$$m_{vc} = \frac{P_{cs}(T_p)M_c}{P_a M_v} \quad (6)$$

$$m_{vw} = \frac{P_{cs}(T_p)M_w}{P_a M_v} \quad (7)$$

Energy conservation

$$\frac{d}{dt} (\rho_p C_p u_s b^2 T_p) = \frac{d}{dt} [\rho_p u_s b^2 (m_{lc} L_c + m_{lw} L_w)] + C_a T_a \rho_a E u_s \quad (8)$$

Equation of state

$$\rho_p = \frac{\rho_a}{\alpha T_p + \gamma T_a} \quad (9)$$

Testing the algorithm

To test the new set of equations we chose four different initial conditions:

Testing the algorithm

To test the new set of equations we chose four different initial conditions:

- *without water*, a mixture of chlorine, 20% vapor and 80% liquid, is released in dry ambient air;

Testing the algorithm

To test the new set of equations we chose four different initial conditions:

- *without water*, a mixture of chlorine, 20% vapor and 80% liquid, is released in dry ambient air;
- *10 %*, a mixture of chlorine, 20% vapor and 80% liquid, is released in ambient air with relative humidity of the 10%;

Testing the algorithm

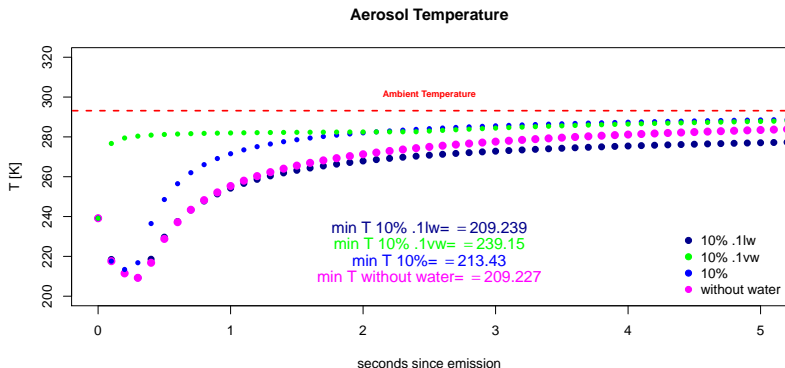
To test the new set of equations we chose four different initial conditions:

- *without water*, a mixture of chlorine, 20% vapor and 80% liquid, is released in dry ambient air;
- *10 %*, a mixture of chlorine, 20% vapor and 80% liquid, is released in ambient air with relative humidity of the 10%;
- *10 % .1vw*, a mixture of chlorine, 10% vapor and 80% liquid, and water vapor, 10%, is released in ambient air with relative humidity of the 10%;

Testing the algorithm

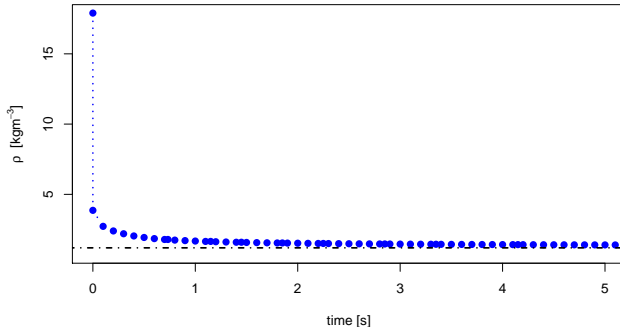
To test the new set of equations we chose four different initial conditions:

- *without water*, a mixture of chlorine, 20% vapor and 80% liquid, is released in dry ambient air;
- *10 %*, a mixture of chlorine, 20% vapor and 80% liquid, is released in ambient air with relative humidity of the 10%;
- *10 % .1vw*, a mixture of chlorine, 10% vapor and 80% liquid, and water vapor, 10%, is released in ambient air with relative humidity of the 10%;
- *10 % .1lw*, a mixture of chlorine, 10% vapor and 80% liquid, and liquid water, 10%, is released in ambient air with relative humidity of the 10%.



The overall behavior of the system seems correct showing an initial loss of temperature due to the evaporation of the liquid part, this process seems to be reasonably balanced by the liquid water condensation. The model proved to be solid even in the extreme case of an initial condition of 10% liquid water inside the plume.

Density



In the very first instants of the simulation the density gradient is very steep and the initial density is very quickly lost, the loss is due to the fast vaporization of the liquids in the aerosols.

Plume spread on the ground

When a dense plume reaches the ground, its weight generates an horizontal momentum that tends to spread the plume.

The heavy gas induced *outflow velocity* depends on the bulk properties of the dense plume, i.e. it depends on the 3D density field and it is obviously not a characteristic of the single particle.

As long as the movement of each particle depends on the characteristics of the *ensemble* a hybrid Eulerian-Lagrangian algorithm is needed.

Plume spread

To take into account the gravitational spread, a horizontal velocity is assigned to each particle:

$$U_g = \sqrt{2g\Delta_{bulk}H_{bulk}} \quad (10)$$

Plume spread

To take into account the gravitational spread, a horizontal velocity is assigned to each particle:

$$U_g = \sqrt{2g\Delta_{bulk} H_{bulk}} \quad (10)$$

height of the plume above the particle

Plume spread

To take into account the gravitational spread, a horizontal velocity is assigned to each particle:

$$U_g = \sqrt{2g \Delta_{bulk} H_{bulk}} \quad (10)$$

height of the plume above the particle

$$\Delta_{bulk} = \frac{\rho_{bulk} - \rho_a}{\rho_a}$$

Plume spread

To take into account the gravitational spread, a horizontal velocity is assigned to each particle:

$$U_g = \sqrt{2g\Delta_{bulk}H_{bulk}} \quad (10)$$

height of the plume above the particle

$$\Delta_{bulk} = \frac{\rho_{bulk} - \rho_a}{\rho_a}$$

ρ_{bulk} bulk density of the plume above the particle.

Plume spread

To take into account the gravitational spread, a horizontal velocity is assigned to each particle:

$$U_g = \sqrt{2g\Delta_{bulk}H_{bulk}} \quad (10)$$

height of the plume above the particle

$$\Delta_{bulk} = \frac{\rho_{bulk} - \rho_a}{\rho_a}$$

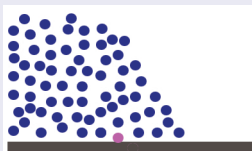
ρ_{bulk} bulk density of the plume above the particle.

$$\begin{cases} U_{gs} = U_g \sin \gamma \\ V_{gs} = U_g \cos \gamma \end{cases} \quad (11)$$

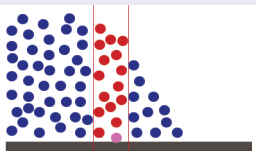
where γ is a random angle extracted from a uniform distribution

When a particle *reaches* the ground all the n_p particles belonging to the same column (on an Eulerian grid) are accounted for estimating the bulk properties of the plume.

Particle reflection on the ground



$$H_{bulk} = \frac{1}{n_p} \sum_{i=1}^{n_p} z_i$$



$$\rho_{bulk} = \frac{1}{n_p} \sum_{i=1}^{n_p} \rho_i$$

Macdona chlorine railway accident, 28 June 2004



Railroad Accident Report NTSB/RAR-06/03

The comparisons presented here refer to Hanna (2007) report:
Comparisons of Six Models using Three Chlorine Release Scenarios
(*Festus, Macdona, Graniteville*)

Six widely-used hazardous gas models (SLAB, HGSYSTEM, ALOHA, SCIPUFF, SAFER/TRACE, PHAST) performances were compared.

Being accidents that occurred at remote locations, no meteorological and concentration observations are available, thus source emission rates were estimated and it was not possible to state which model was *best*.

It was concluded that the six models agree in their estimate of the downwind dispersion within one order of magnitude

Macdona chlorine railway accident, 28 June 2004

Input Parameters

- Emission lasted 136 s, dispersion simulations 30 minutes

Macdona chlorine railway accident, 28 June 2004

Input Parameters

- Emission lasted 136 s, dispersion simulations 30 minutes
- after *flashing* the plume is 80% liquid and 20% vapor

Macdona chlorine railway accident, 28 June 2004

Input Parameters

- Emission lasted 136 s, dispersion simulations 30 minutes
- after *flashing* the plume is 80% liquid and 20% vapor
- initial temperature of the plume 239.15 K

Macdona chlorine railway accident, 28 June 2004

Input Parameters

- Emission lasted 136 s, dispersion simulations 30 minutes
- after *flashing* the plume is 80% liquid and 20% vapor
- initial temperature of the plume 239.15 K
- initial velocity of the plume after expansion 100 m s^{-1}

Macdona chlorine railway accident, 28 June 2004

Input Parameters

- Emission lasted 136 s, dispersion simulations 30 minutes
- after *flashing* the plume is 80% liquid and 20% vapor
- initial temperature of the plume 239.15 K
- initial velocity of the plume after expansion 100 $m s^{-1}$
- relative humidity 100%

Macdona chlorine railway accident, 28 June 2004

Input Parameters

- Emission lasted 136 s, dispersion simulations 30 minutes
- after *flashing* the plume is 80% liquid and 20% vapor
- initial temperature of the plume 239.15 K
- initial velocity of the plume after expansion 100 m s^{-1}
- relative humidity 100%
- Computation domain: 2,200 m x 1,400 m x 1,000 m

Macdona chlorine railway accident, 28 June 2004

Input Parameters

- Emission lasted 136 s, dispersion simulations 30 minutes
- after *flashing* the plume is 80% liquid and 20% vapor
- initial temperature of the plume 239.15 K
- initial velocity of the plume after expansion 100 ms^{-1}
- relative humidity 100%
- Computation domain: 2,200 m x 1,400 m x 1,000 m
- 10 particles released per second from the 1 m source

Macdona chlorine railway accident, 28 June 2004

Input Parameters

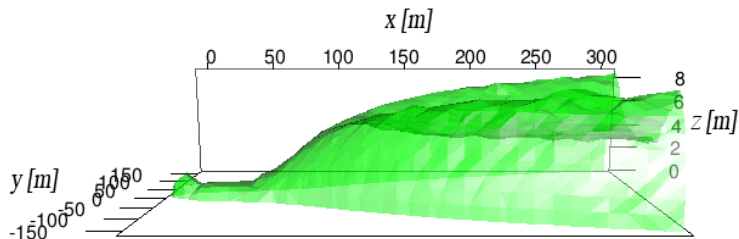
- Emission lasted 136 s, dispersion simulations 30 minutes
- after *flashing* the plume is 80% liquid and 20% vapor
- initial temperature of the plume 239.15 K
- initial velocity of the plume after expansion 100 m s^{-1}
- relative humidity 100%
- Computation domain: 2,200 m x 1,400 m x 1,000 m
- 10 particles released per second from the 1 m source
- Concentration computed at 60 samplers per arc

Macdona chlorine railway accident, 28 June 2004

Input Parameters

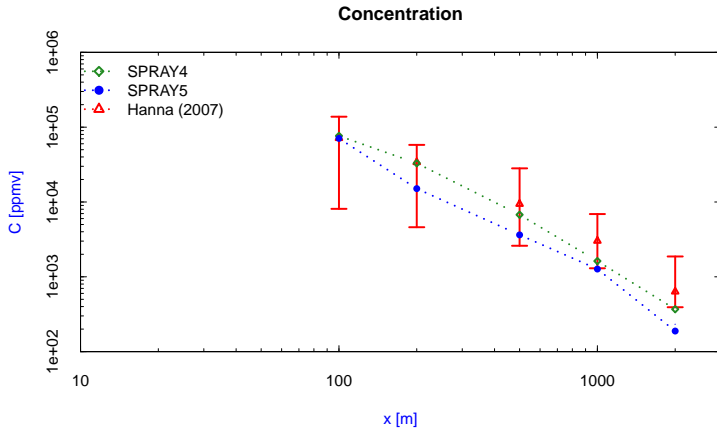
- Emission lasted 136 s, dispersion simulations 30 minutes
- after *flashing* the plume is 80% liquid and 20% vapor
- initial temperature of the plume 239.15 K
- initial velocity of the plume after expansion 100 m s^{-1}
- relative humidity 100%
- Computation domain: 2,200 m x 1,400 m x 1,000 m
- 10 particles released per second from the 1 m source
- Concentration computed at 60 samplers per arc
- downwind distances: 0.1, 0.2, 0.5, 1.0 and 2.0 km

2000 ppm Concentration Contour



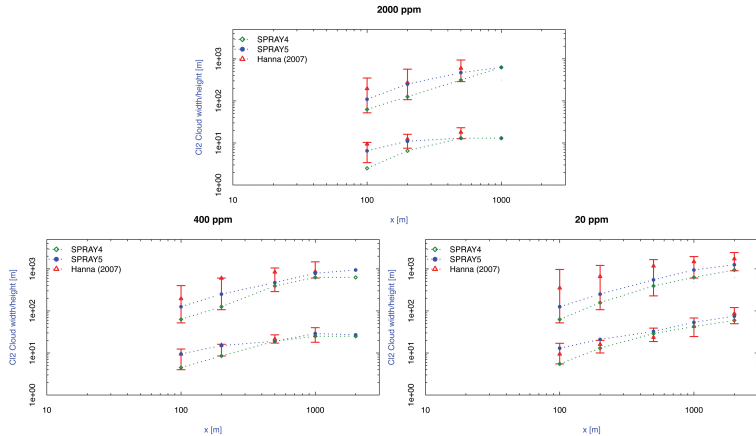
The 2000 ppm 3D contour plot gives an idea of the shape of the contaminant cloud. Up to 50 m from the source the dynamic of the plume is dominated by the initial momentum while at farthest distances it is regulated by buoyancy. From 150 m to 300 m a lowering of the contour at the centre can be noticed, the dense cloud weight induces gravity spreading and radial outflow velocity increasing the contaminant concentration on the sides of the plume.

Chlorine concentration versus distance



Cl_2 maximum 10 minutes average concentration.

Chlorine cloud width and height at 20, 400 and 2000 ppm



A new module for two-phase releases has been developed and implemented in MicroSpray.

MicroSpray Two-phase releases module

- reproduction of aerosols phase transitions and thermodynamics

A new module for two-phase releases has been developed and implemented in MicroSpray.

MicroSpray Two-phase releases module

- reproduction of aerosols phase transitions and thermodynamics
- introduction of water vapor

A new module for two-phase releases has been developed and implemented in MicroSpray.

MicroSpray Two-phase releases module

- reproduction of aerosols phase transitions and thermodynamics
- introduction of water vapor
- gravitational spread

A new module for two-phase releases has been developed and implemented in MicroSpray.

MicroSpray Two-phase releases module

- reproduction of aerosols phase transitions and thermodynamics
- introduction of water vapor
- gravitational spread
- rebound on obstacles

A new module for two-phase releases has been developed and implemented in MicroSpray.

MicroSpray Two-phase releases module

- reproduction of aerosols phase transitions and thermodynamics
- introduction of water vapor
- gravitational spread
- rebound on obstacles
- jet treatment

A new module for two-phase releases has been developed and implemented in MicroSpray.

MicroSpray Two-phase releases module

- reproduction of aerosols phase transitions and thermodynamics
- introduction of water vapor
- gravitational spread
- rebound on obstacles
- jet treatment

Wish list

- emission model

A new module for two-phase releases has been developed and implemented in MicroSpray.

MicroSpray Two-phase releases module

- reproduction of aerosols phase transitions and thermodynamics
- introduction of water vapor
- gravitational spread
- rebound on obstacles
- jet treatment

Wish list

- emission model
- flashing

A new module for two-phase releases has been developed and implemented in MicroSpray.

MicroSpray Two-phase releases module

- reproduction of aerosols phase transitions and thermodynamics
- introduction of water vapor
- gravitational spread
- rebound on obstacles
- jet treatment

Wish list

- emission model
- flashing
- rain out

Acknowledgements

The authors would like to explicitly remind that the distribution, maintenance and development of MicroSpray are carried out in collaboration with ARIA Technologies.



Thank you!



I.mortarini@isac.cnr.it