

Comparing the Performance of ADMS and AERMOD using a Hybrid Model and Conditional Analysis Techniques

Andrew Malby¹, Roger Timmis², Duncan Whyatt¹,
David Carruthers³ and Jenny Stocker³

¹ Lancaster Environment Centre, Lancaster University, UK

² Environment Agency for England and Wales, UK

³ Cambridge Environmental Research Consultants (CERC), UK



Introduction

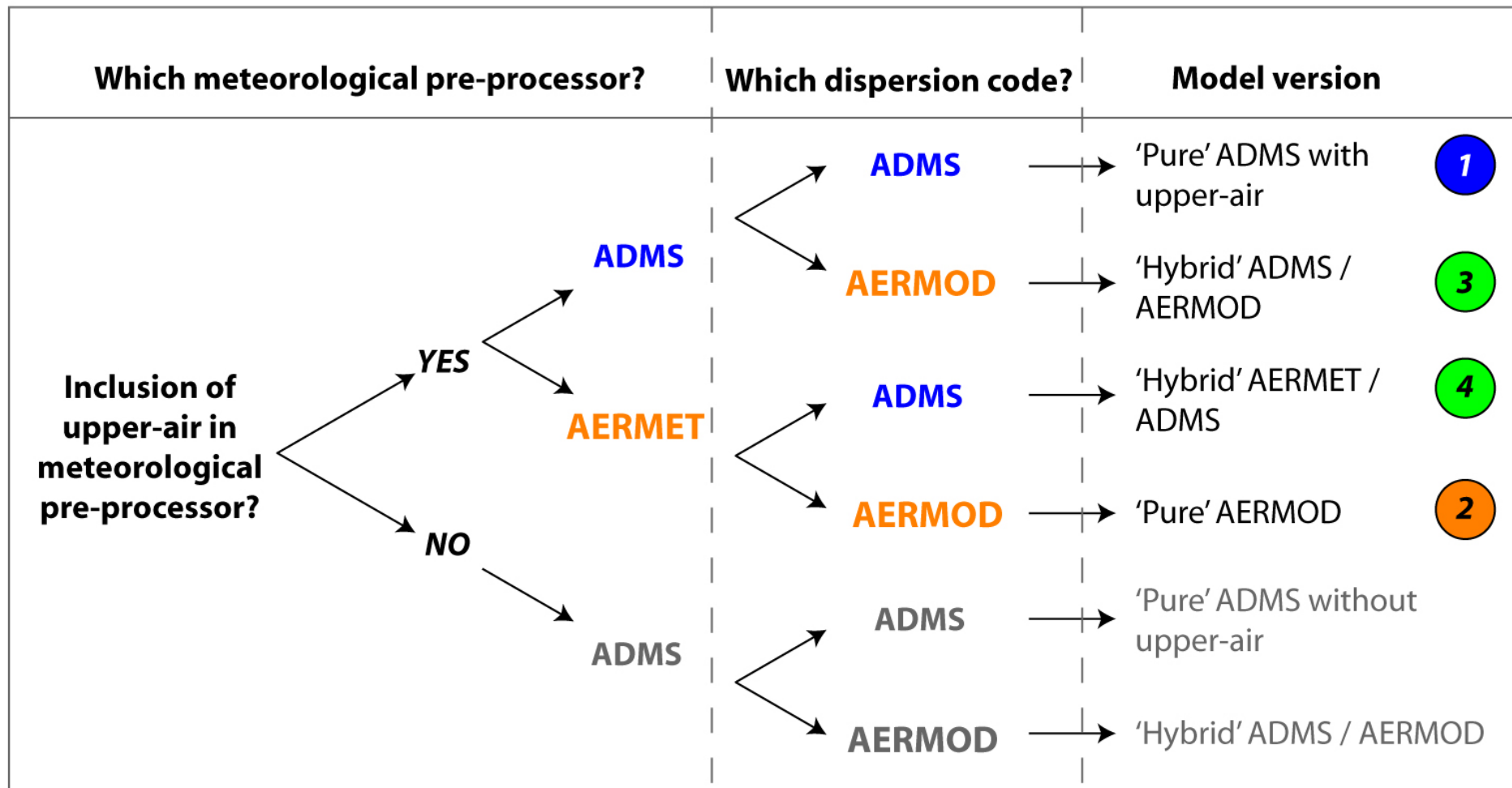
- Dispersion model inter-comparisons:
 - Central to 'Harmonisation'
 - Important for regulation
 - But, limitations include:
 - (1) Speed / ease of comparison
 - (2) Targeting comparisons on most relevant aspect
 - (3) Relating differences in model performance to processes / inputs

Here we address some of these limitations by demonstrating:

- (i) a new 'hybrid' model, and**
- (ii) conditional methods for organising & clarifying comparisons**

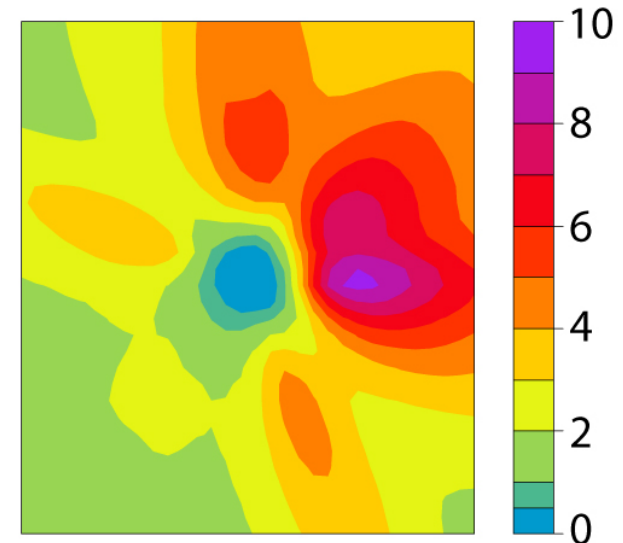
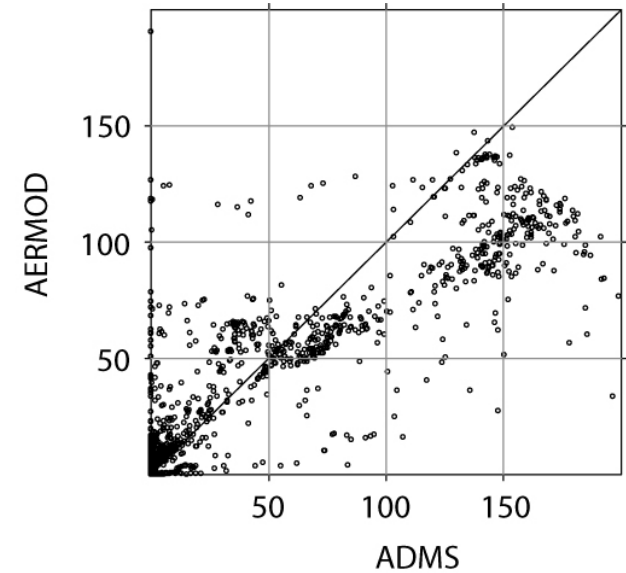
Cambridge Environmental Research Consultants (CERC) Hybrid Dispersion Model

Compares 2 'new-generation' models: ADMS (UK) and AERMOD (US)



Model Inter-comparison Approaches

- Hybrid model → easier & faster model comparisons
- BUT, interpretation challenging:
 - Scatter plots: how to audit differences back to processes?
 - ‘One-shot’ comparisons: how informative/representative?
 - ‘Right answer for right reasons?’



Study Outline

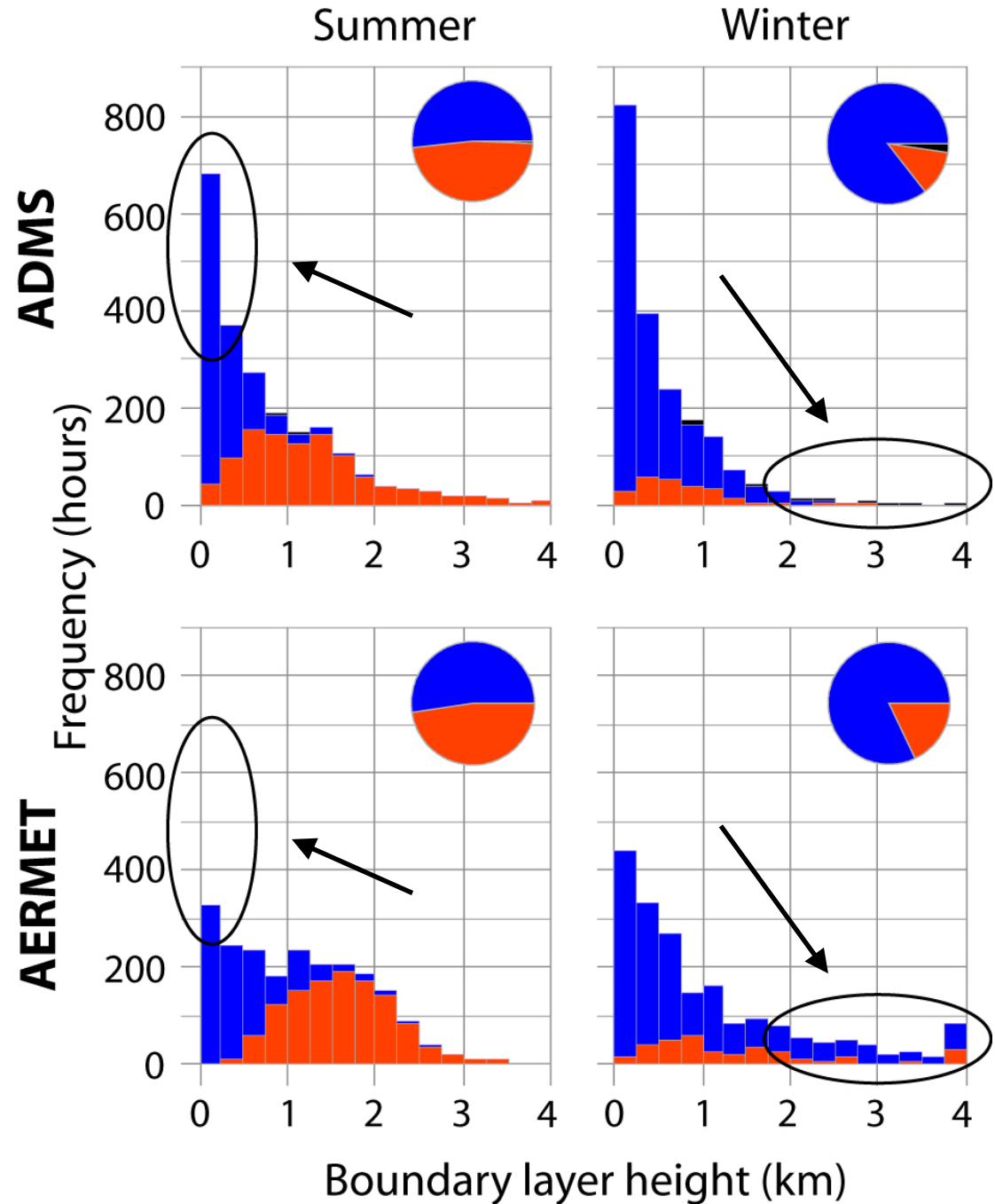
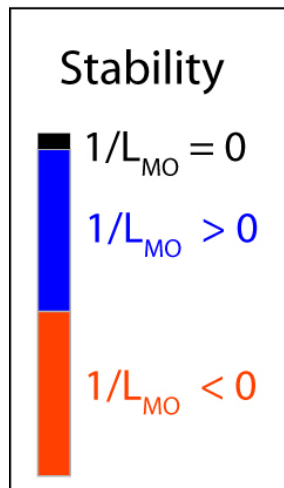
- (1) Meteorological pre-processor comparison:
 - Boundary-layer height

- (2) Case study design:
 - Tall stack source
 - 2 conditional groups – ‘convective’ & ‘knock-down’

- (3) Comparison using hybrid model

Comparison of Boundary-layer height

- Many similarities
- Most differences for high/low boundary layers

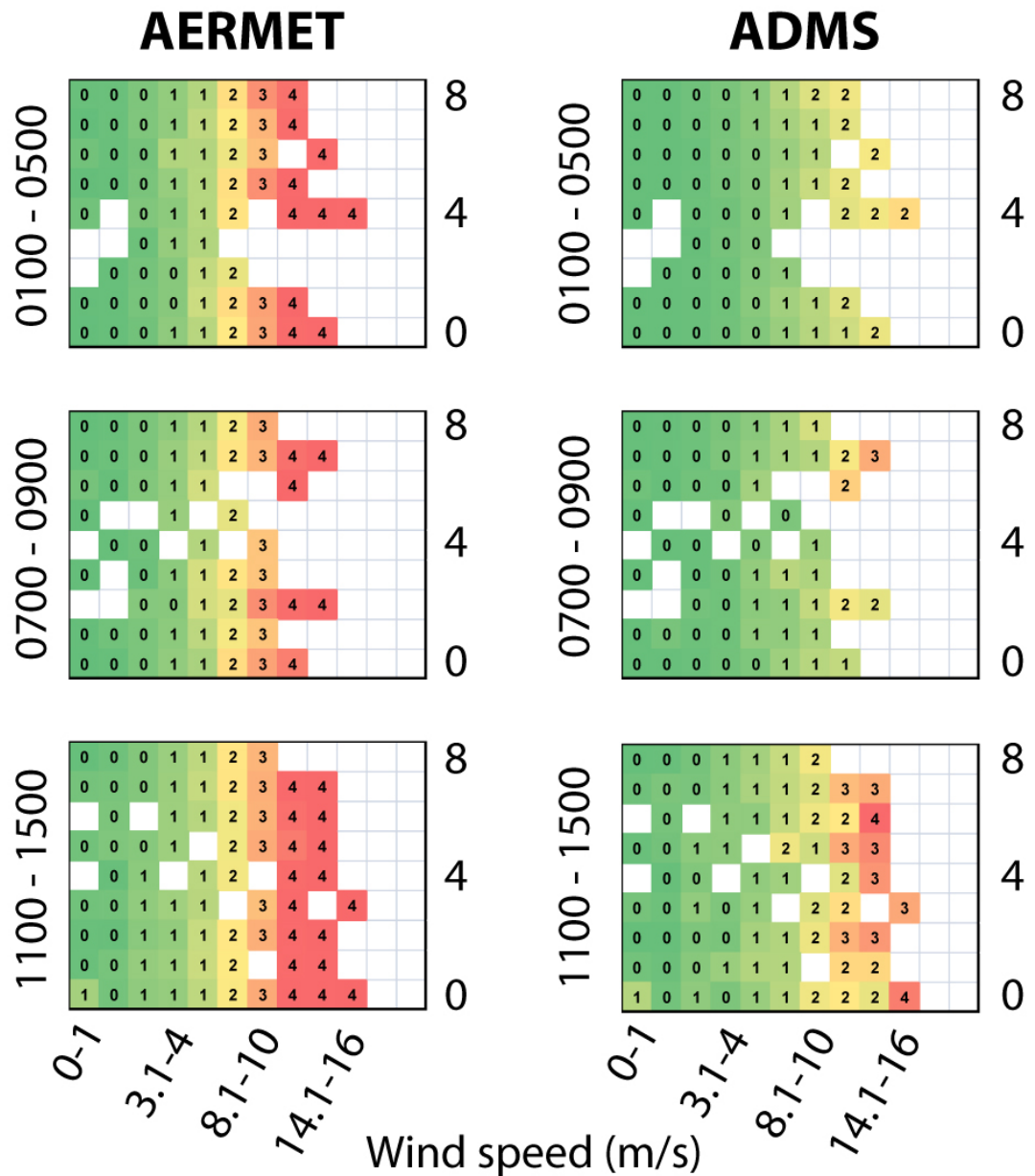
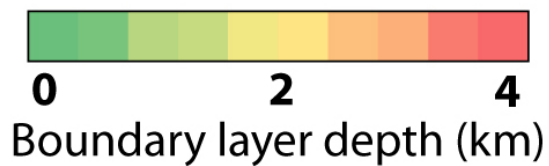


Dispersion Calendar: Winter Boundary-layer height

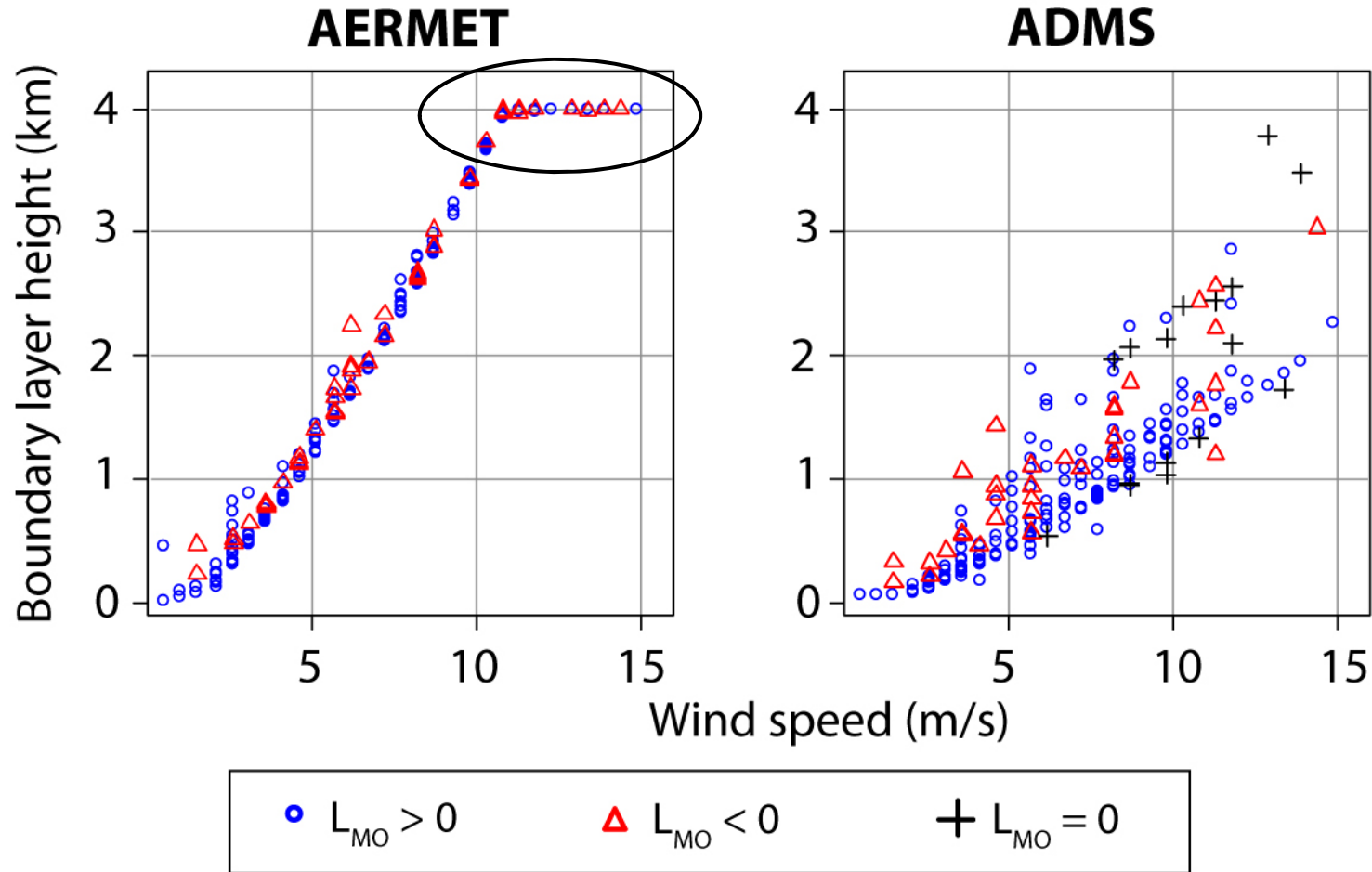
- Dissection scheme based on meteorological observations

- Confirms differences for high B.L.'s

- AERMET: B.L.'s more sensitive to wind speed

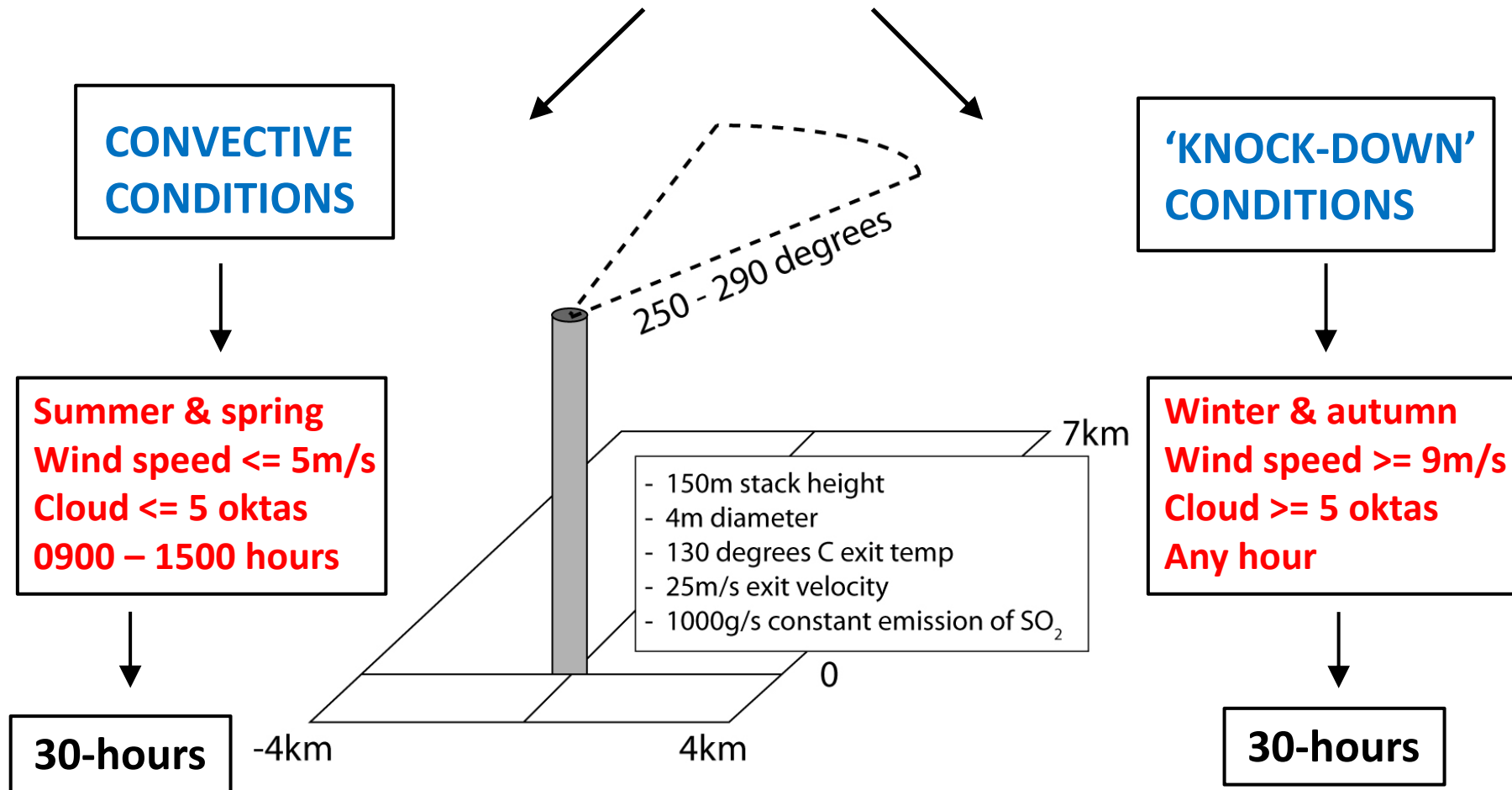


Sensitivity of B.L.H to Wind Speed: Winter

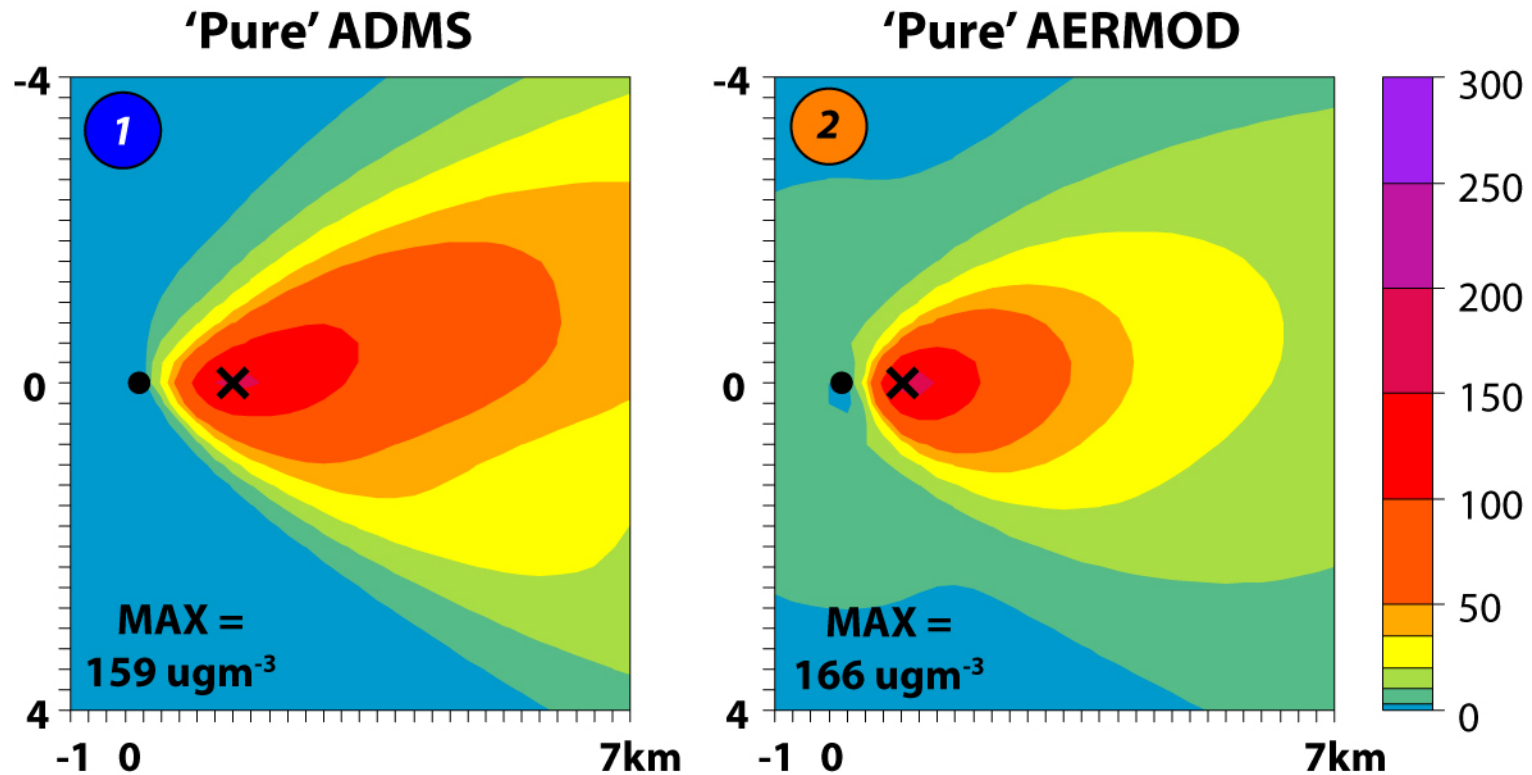


Case Study Design

Compare concentration fields for ADMS and AERMOD for selected conditions:



Convective conditions (1 of 3)



SIMILARITIES:

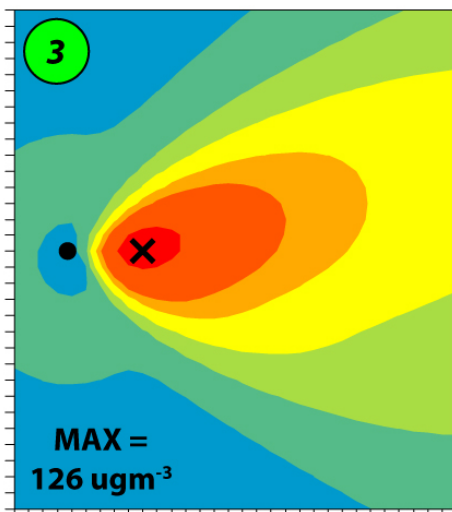
- Comparable magnitude of max. concentration

DIFFERENCES:

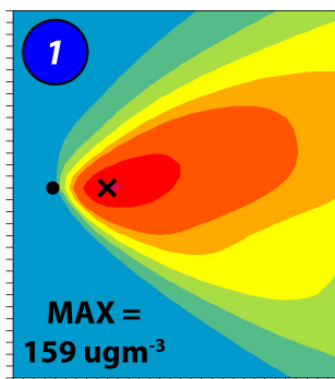
- Distance of max. concentration from source
- 'Upwind' pollution impact predicted by AERMOD
- Rate of downwind SO_2 decline

Convective conditions (2 of 3)

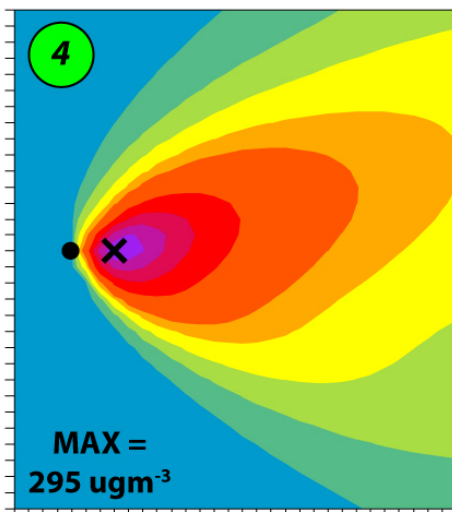
'Hybrid' model output:
ADMS met. & AERMOD dispersion



'Pure' ADMS



'Hybrid' model output:
AERMET met. & ADMS dispersion



1 — 3

Effect of changing the **dispersion code** only:

- 'Upwind' pollution impact
- Reduction in max. concentration
- Shift towards nearer-field impacts

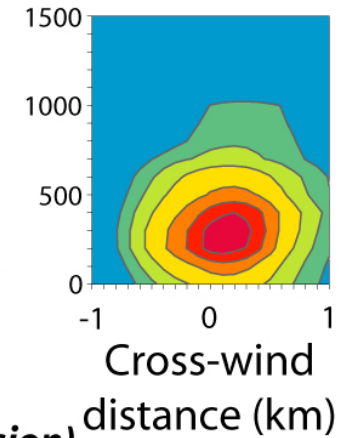
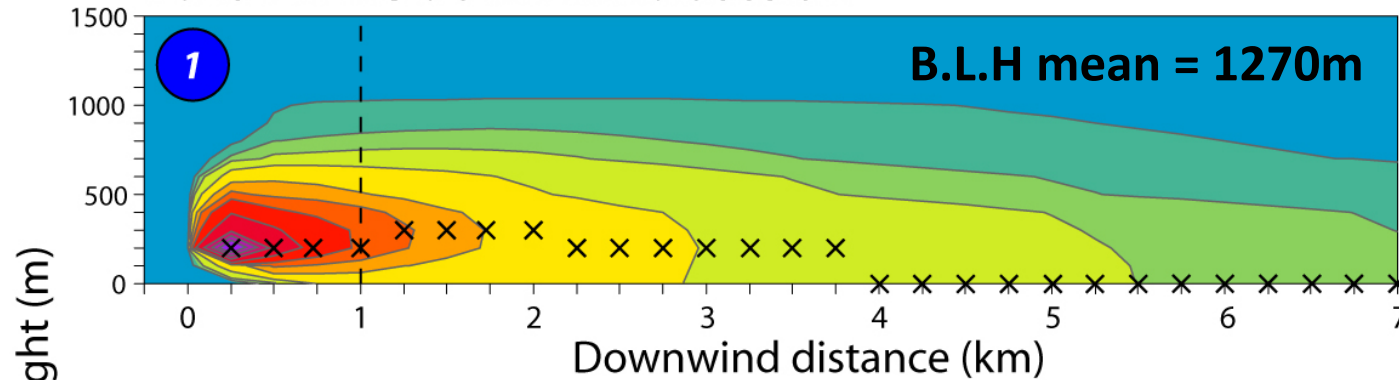
1 — 4

Effect of changing the **meteorological pre-processor** only:

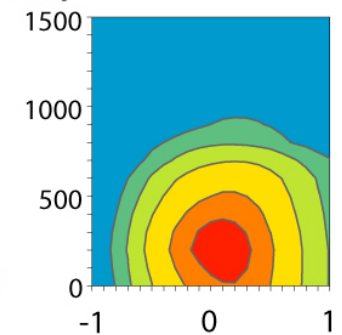
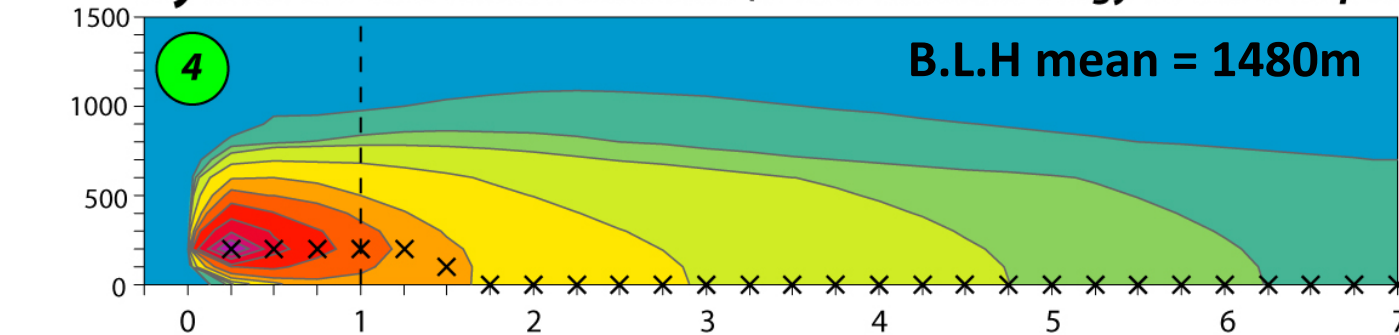
- Substantial (85%) increase in max concentration
- Max. concentration nearer source

Convective conditions (3 of 3)

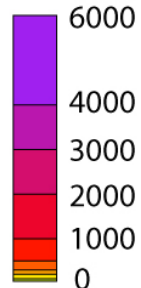
'Pure' ADMS down-wind section



Hybrid down-wind section (AERMET meteorology & ADMS dispersion)



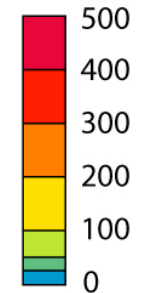
✕ Crosses indicate height of plume centre-line



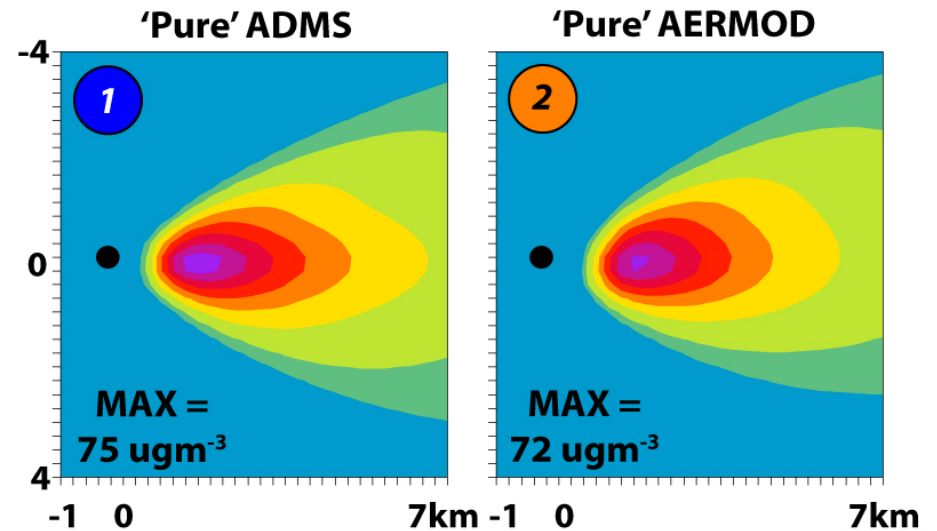
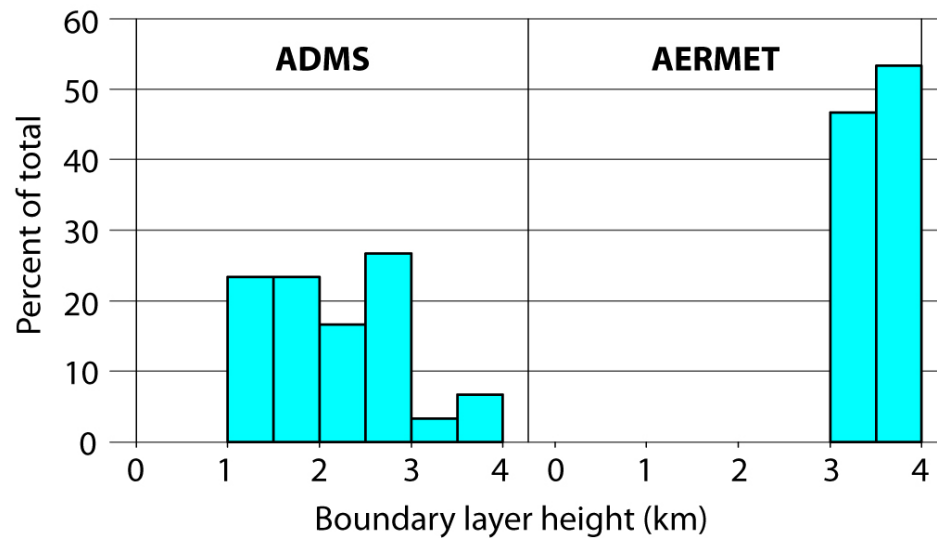
AERMET meteorology grounds the plume nearer the source than ADMS meteorology (1.5km vs 4km)



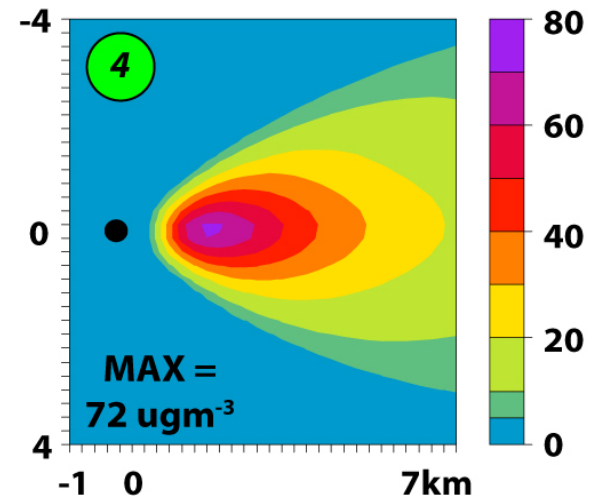
Substantially greater near-field maximum



Plume 'knock-down' conditions (1 of 2)



'Hybrid' model output:
AERMET met. and ADMS dispersion

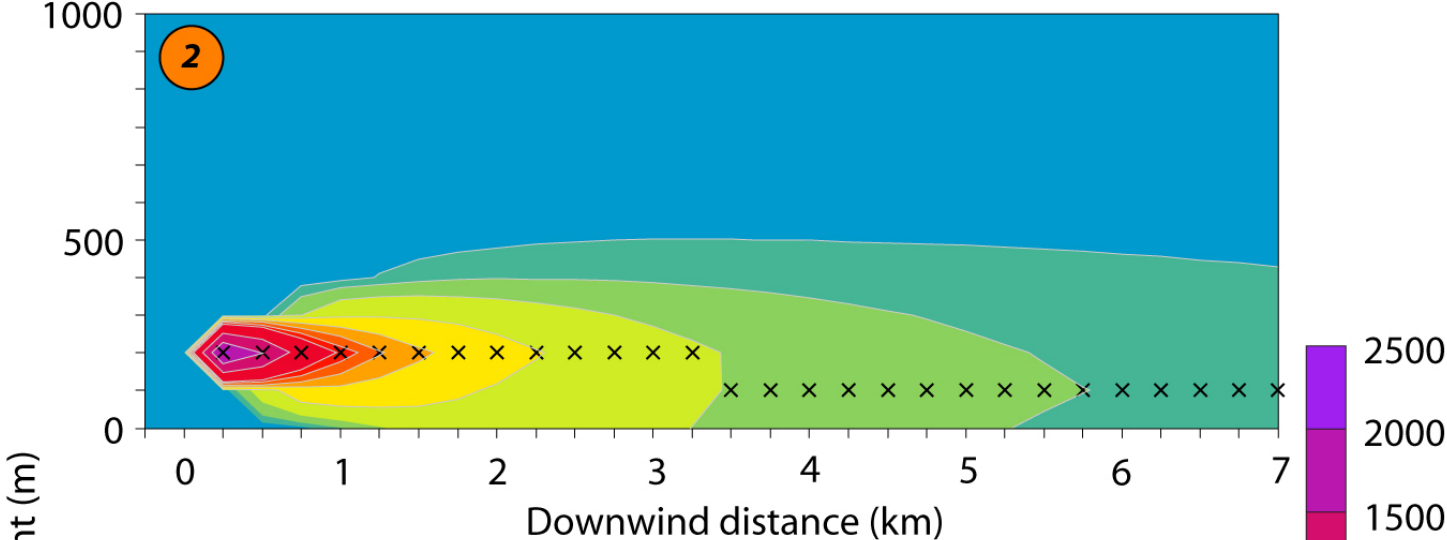


Large differences in winter boundary-layer calculations

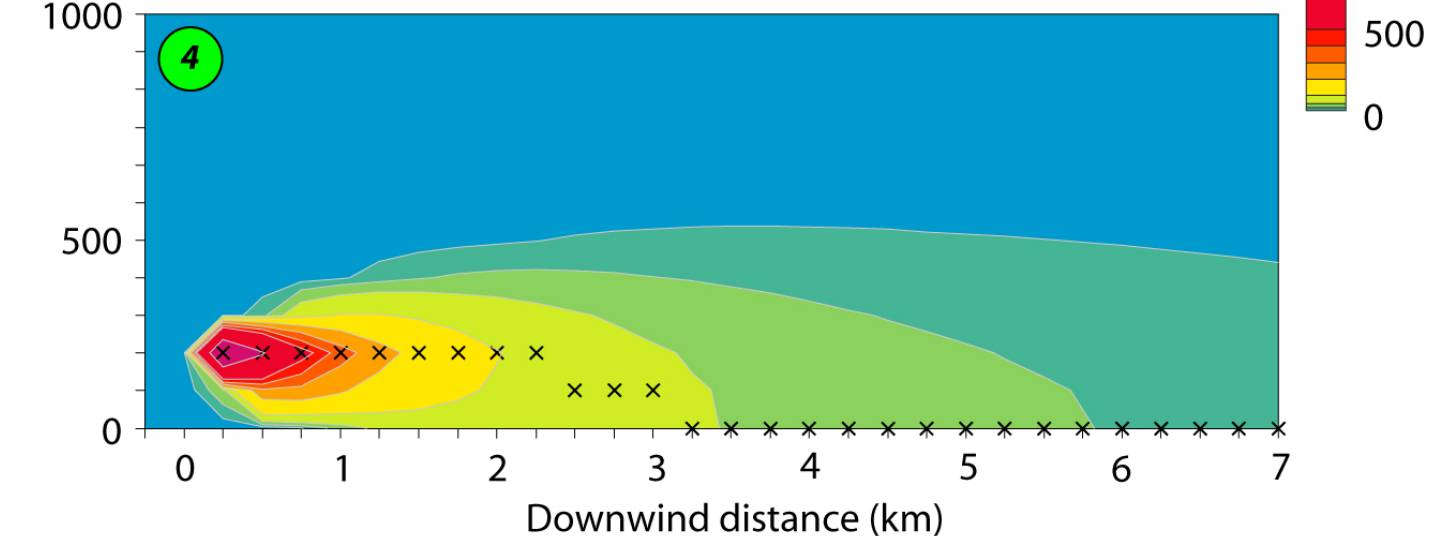
But, comparable ground-level concentration maxima and similar pollution footprints

Plume 'knock-down' conditions (2 of 2)

'Pure' AERMOD down-wind section



Hybrid down-wind section (AERMET meteorology & ADMS dispersion)



Conclusions (1)

- Hybrid model → compare models faster
- ‘Conditional’ analysis – grouped comparison → insight into processes
- Visualisation techniques, e.g. Dispersion Calendar, down-wind sections for improved understanding
 - Dispersion calendar – wind speed dependence
 - Plume sections – grounding of plumes

Conclusions (2)

- Boundary-layer Height:
 - Differences between AERMET and ADMS
 - ‘Ceiling’ height
 - Stability dependence/independence
- Convective Conditions:
 - Broad agreement between ‘pure’ models
 - But agreement is not robust for met. pre-processor change
- Knock-down Conditions
 - No divergence
 - Robust for met. pre-processor change